

Product datasheet for **AP51451PU-N**

GSPT2 (Center) Rabbit Polyclonal Antibody

Product data:

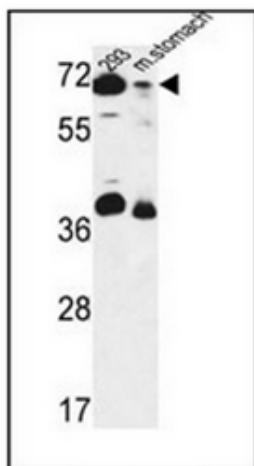
Product Type:	Primary Antibodies
Applications:	WB
Recommended Dilution:	ELISA: 1/1000. Western Blot: 1/100-1/500.
Reactivity:	Human, Mouse
Host:	Rabbit
Isotype:	Ig
Clonality:	Polyclonal
Immunogen:	KLH conjugated synthetic peptide between 223~253 amino acids from the Central region of Human GSPT2 / ERF3B
Specificity:	This antibody recognizes Human and Mouse GSPT2 / ERF3B (Center).
Formulation:	PBS containing 0.09% (W/V) Sodium Azide as preservative State: Aff - Purified State: Liquid purified Ig fraction
Concentration:	lot specific
Purification:	Affinity Chromatography on Protein A
Conjugation:	Unconjugated
Storage:	Store undiluted at 2-8°C for one month or (in aliquots) at -20°C for longer. Avoid repeated freezing and thawing.
Stability:	Shelf life: one year from despatch.
Gene Name:	G1 to S phase transition 2
Database Link:	Entrez Gene 14853 Mouse Entrez Gene 23708 Human Q8IYD1
Background:	ERF3B encodes a GTPase that belongs to the GTP-binding elongation factor family. The encoded protein is a polypeptide release factor that complexes with eukaryotic peptide chain release factor 1 to mediate translation termination. This protein may also be involved in mRNA stability.
Synonyms:	ERF3B; FLJ10441; GST2



[View online »](#)

Note: Molecular Weight: 68883 Da

Product images:



Western blot analysis of GSPT2 / ERF3B Antibody -No in 293 cell line and mouse stomach tissue lysates (35ug/lane). This demonstrates the ERF3B antibody detected the ERF3B protein (arrow).