

## Product datasheet for **AP51450PU-N**

### ERCC8 (Center) Rabbit Polyclonal Antibody

#### Product data:

Product Type:	Primary Antibodies
Applications:	IHC, WB
Recommended Dilution:	<b>ELISA:</b> 1/1000. <b>Western Blot:</b> 1/100-1/500. <b>Immunohistochemistry on Paraffin Sections:</b> 1/50-1/100.
Reactivity:	Human, Mouse
Host:	Rabbit
Isotype:	Ig
Clonality:	Polyclonal
Immunogen:	KLH conjugated synthetic peptide between 210-238 amino acids from the Central region of Human ERCC8
Specificity:	This antibody recognizes Human and Mouse ERCC8 (Center).
Formulation:	PBS containing 0.09% (W/V) Sodium Azide as preservative State: Aff - Purified State: Liquid purified Ig fraction
Concentration:	lot specific
Purification:	Affinity Chromatography on Protein A
Conjugation:	Unconjugated
Storage:	Store undiluted at 2-8°C for one month or (in aliquots) at -20°C for longer. Avoid repeated freezing and thawing.
Stability:	Shelf life: one year from despatch.
Gene Name:	ERCC excision repair 8, CSA ubiquitin ligase complex subunit
Database Link:	<u><a href="#">Entrez Gene 71991 Mouse</a></u> <u><a href="#">Entrez Gene 1161 Human</a></u> <u><a href="#">Q13216</a></u>



[View online »](#)

**Background:** This gene encodes a WD repeat protein, which interacts with Cockayne syndrome type B (CSB) protein and with p44 protein, a subunit of the RNA polymerase II transcription factor IIH. Mutations in this gene have been identified in patients with hereditary disease Cockayne syndrome (CS). CS cells are abnormally sensitive to ultraviolet radiation and are defective in the repair of transcriptionally active genes.

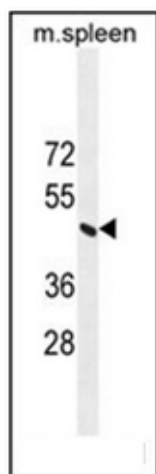
**Synonyms:** KKN1, CSA, ERCC-8

**Note:** **Molecular Weight:** 44055 Da

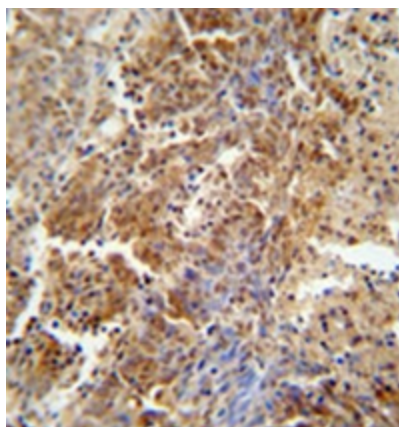
**Protein Families:** Druggable Genome, Transcription Factors

**Protein Pathways:** Nucleotide excision repair, Ubiquitin mediated proteolysis

### Product images:



Western blot analysis of ERCC8 Antibody in mouse spleen tissue lysates (35ug/lane). This demonstrates the ERCC8 antibody detected the ERCC8 protein (arrow).



Formalin fixed and paraffin embedded human lung carcinoma reacted with ERCC8 Antibody followed by peroxidase conjugation of the secondary antibody and DAB staining.