

Product datasheet for **AP51447PU-N**

EPS8L1 (N-term) Rabbit Polyclonal Antibody

Product data:

Product Type:	Primary Antibodies
Applications:	WB
Recommended Dilution:	ELISA: 1/1000. Western Blot: 1/100-1/500.
Reactivity:	Human
Host:	Rabbit
Isotype:	Ig
Clonality:	Polyclonal
Immunogen:	KLH conjugated synthetic peptide between 1-30 amino acids from the N-terminal region of Human EPS8L1
Specificity:	This antibody recognizes Human EPS8L1 (N-term).
Formulation:	PBS containing 0.09% (W/V) Sodium Azide as preservative State: Aff - Purified State: Liquid purified Ig fraction
Concentration:	lot specific
Purification:	Affinity Chromatography on Protein A
Conjugation:	Unconjugated
Storage:	Store undiluted at 2-8°C for one month or (in aliquots) at -20°C for longer. Avoid repeated freezing and thawing.
Stability:	Shelf life: one year from despatch.
Gene Name:	EPS8 like 1
Database Link:	Entrez Gene 54869 Human Q8TE68
Background:	EPS8L1 is a protein that is related to epidermal growth factor receptor pathway substrate 8 (EPS8), a substrate for the epidermal growth factor receptor. The function of this protein is unknown. At least two alternatively spliced transcript variants encoding different isoforms have been found for this gene.
Synonyms:	EPS8-like protein 1, DRC3, EPS8R1, PP10566

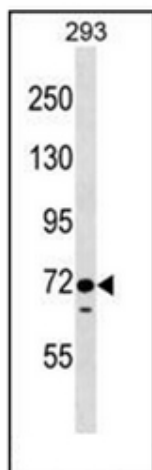


[View online »](#)

Note: **Molecular Weight:** 80251 Da

Protein Families: Druggable Genome

Product images:



Western blot analysis of EPS8L1 Antibody (N-term) in 293 cell line lysates (35ug/lane). This demonstrates the EPS8L1 antibody detected the EPS8L1 protein (arrow).