

Product datasheet for **AP51446PU-N**

EPOR (Center) Rabbit Polyclonal Antibody

Product data:

Product Type:	Primary Antibodies
Applications:	FC, WB
Recommended Dilution:	ELISA: 1/1000. Western Blot: 1/100-1/500. Flow Cytometry: 1/10-1/50.
Reactivity:	Human
Host:	Rabbit
Isotype:	Ig
Clonality:	Polyclonal
Immunogen:	KLH conjugated synthetic peptide between 328-357 amino acids from the Central region of Human Erythropoietin receptor
Specificity:	This antibody recognizes Human Erythropoietin receptor (Center).
Formulation:	PBS containing 0.09% (W/V) Sodium Azide as preservative State: Aff - Purified State: Liquid purified Ig fraction
Concentration:	lot specific
Purification:	Affinity Chromatography on Protein A
Conjugation:	Unconjugated
Storage:	Store undiluted at 2-8°C for one month or (in aliquots) at -20°C for longer. Avoid repeated freezing and thawing.
Stability:	Shelf life: one year from despatch.
Gene Name:	erythropoietin receptor
Database Link:	Entrez Gene 2057 Human P19235



[View online »](#)

Background:

This gene encodes the erythropoietin receptor which is a member of the cytokine receptor family. Upon erythropoietin binding, this receptor activates Jak2 tyrosine kinase which activates different intracellular pathways including: Ras/MAP kinase, phosphatidylinositol 3-kinase and STAT transcription factors. The stimulated erythropoietin receptor appears to have a role in erythroid cell survival. Defects in the erythropoietin receptor may produce erythroleukemia and familial erythrocytosis. Dysregulation of this gene may affect the growth of certain tumors. Alternate splicing results in multiple transcript variants.

Synonyms:

EPOR, EPO-R

Note:

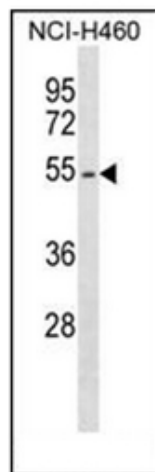
Molecular Weight: 55065 Da

Protein Families:

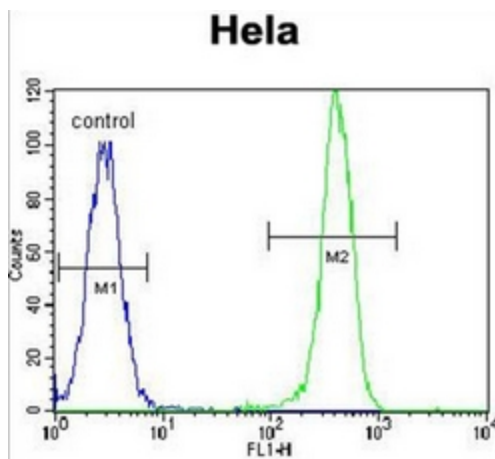
Druggable Genome, Secreted Protein, Transmembrane

Protein Pathways:

Cytokine-cytokine receptor interaction, Hematopoietic cell lineage, Jak-STAT signaling pathway

Product images:


Western blot analysis of Erythropoietin receptor Antibody in NCI-H460 cell line lysates (35ug/lane). This demonstrates the EPOR antibody detected the EPOR protein (arrow).



Flow cytometric analysis of HeLa cells using Erythropoietin receptor Antibody (right histogram) compared to a negative control cell (left histogram). FITC-conjugated goat-anti-rabbit secondary antibodies were used for the analysis.