

Product datasheet for **AP51445PU-N**

Epsin 1 (EPN1) (Center) Rabbit Polyclonal Antibody

Product data:

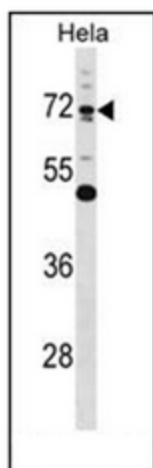
Product Type:	Primary Antibodies
Applications:	WB
Recommended Dilution:	ELISA: 1/1000. Western Blot: 1/100-1/500.
Reactivity:	Human
Host:	Rabbit
Isotype:	Ig
Clonality:	Polyclonal
Immunogen:	KLH conjugated synthetic peptide between 202-232 amino acids from the Central region of Human Epsin-1
Specificity:	This antibody recognizes Human Epsin-1 (Center).
Formulation:	PBS containing 0.09% (W/V) Sodium Azide as preservative State: Aff - Purified State: Liquid purified Ig fraction
Concentration:	lot specific
Purification:	Affinity Chromatography on Protein A
Conjugation:	Unconjugated
Storage:	Store undiluted at 2-8°C for one month or (in aliquots) at -20°C for longer. Avoid repeated freezing and thawing.
Stability:	Shelf life: one year from despatch.
Gene Name:	epsin 1
Database Link:	Entrez Gene 29924 Human Q9Y6I3
Background:	EPN1 is an endocytic accessory protein that interacts with EPS15 (MIM 600051), the alpha subunit of the clathrin adaptor AP2 (AP2A1; MIM 601026), and clathrin (see MIM 118960), as well as with other accessory proteins for the endocytosis of clathrin-coated vesicles.
Synonyms:	EPN1



[View online »](#)

Note: **Molecular Weight:** 57575 Da

Product images:



Western blot analysis of Epsin-1 Antibody in HeLa cell line lysates (35ug/lane). This demonstrates the EPN1 antibody detected the EPN1 protein (arrow).