

Product datasheet for **AP51440PU-N**

HIF 2 alpha (EPAS1) (N-term) Rabbit Polyclonal Antibody

Product data:

Product Type:	Primary Antibodies
Applications:	FC, WB
Recommended Dilution:	ELISA: 1/1,000. Western Blot: 1/100-1/500. Flow Cytometry: 1/10-1/50.
Reactivity:	Human
Host:	Rabbit
Isotype:	Ig
Clonality:	Polyclonal
Immunogen:	KLH conjugated synthetic peptide between 127-154 amino acids from the N-terminal region of Human HIF2A
Specificity:	This antibody recognizes Human HIF2A / HIF2 alpha (N-term).
Formulation:	PBS containing 0.09% (W/V) Sodium Azide as preservative State: Aff - Purified State: Liquid purified Ig fraction
Concentration:	lot specific
Purification:	Affinity Chromatography on Protein A
Conjugation:	Unconjugated
Storage:	Store undiluted at 2-8°C for one month or (in aliquots) at -20°C for longer. Avoid repeated freezing and thawing.
Stability:	Shelf life: one year from despatch.
Gene Name:	endothelial PAS domain protein 1
Database Link:	Entrez Gene 2034 Human Q99814



[View online »](#)

Background:

This gene encodes a transcription factor involved in the induction of genes regulated by oxygen, which is induced as oxygen levels fall. The encoded protein contains a basic-helix-loop-helix domain protein dimerization domain as well as a domain found in proteins in signal transduction pathways which respond to oxygen levels. Mutations in this gene are associated with erythrocytosis familial type 4.

Synonyms:

BHLHE73, HIF-2 alpha, MOP2, PASD2, Hypoxia-inducible factor 2 alpha, HIF-1 alpha-like factor, HLF, HIF-related factor, EPAS1

Note:

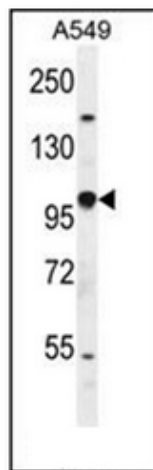
Molecular Weight: 96459 Da

Protein Families:

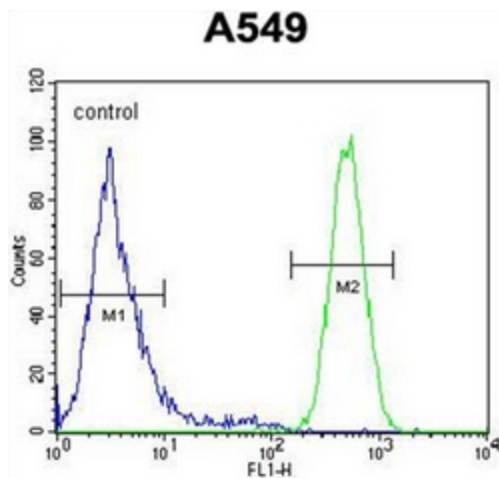
Druggable Genome, Transcription Factors

Protein Pathways:

Pathways in cancer, Renal cell carcinoma

Product images:


Western blot analysis of HIF2A / HIF2 alpha Antibody (N-term) in A549 cell line lysates (35ug/lane). This demonstrates the EPAS1 antibody detected the EPAS1 protein (arrow).



Flow cytometric analysis of A549 cells using HIF2A / HIF2 alpha Antibody (N-term) (right histogram) compared to a negative control cell (left histogram). FITC-conjugated goat-anti-rabbit secondary antibodies were used for the analysis.