

Product datasheet for **AP51439PU-N**

ENTPD3 (C-term) Rabbit Polyclonal Antibody

Product data:

Product Type:	Primary Antibodies
Applications:	FC, IHC, WB
Recommended Dilution:	ELISA: 1/1000. Western Blot: 1/100-1/500. Flow Cytometry: 1/10-1/50. Immunohistochemistry on Paraffin Sections: 1/50-1/100.
Reactivity:	Human
Host:	Rabbit
Isotype:	Ig
Clonality:	Polyclonal
Immunogen:	KLH conjugated synthetic peptide between 499-531 amino acids from the C-terminal region of Human ENTPD3.
Specificity:	This antibody recognizes Human CD39L3 / ENTPD3 (C-term).
Formulation:	PBS containing 0.09% (W/V) Sodium Azide as preservative State: Aff - Purified State: Liquid purified Ig fraction
Concentration:	lot specific
Purification:	Affinity Chromatography on Protein A
Conjugation:	Unconjugated
Storage:	Store undiluted at 2-8°C for one month or (in aliquots) at -20°C for longer. Avoid repeated freezing and thawing.
Stability:	Shelf life: one year from despatch.
Gene Name:	ectonucleoside triphosphate diphosphohydrolase 3
Database Link:	Entrez Gene 956 Human O75355
Background:	ENTPD3 is similar to E-type nucleotidases (NTPases). NTPases, such as CD39, mediate catabolism of extracellular nucleotides. ENTPD3 contains 4 apyrase-conserved regions which is characteristic of NTPases.



[View online »](#)

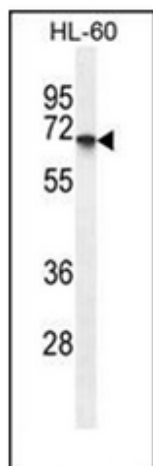
Synonyms: NTPDase 3, Ecto-ATP diphosphohydrolase, CD39 antigen-like 3, HB6

Note: **Molecular Weight:** 59105 Da

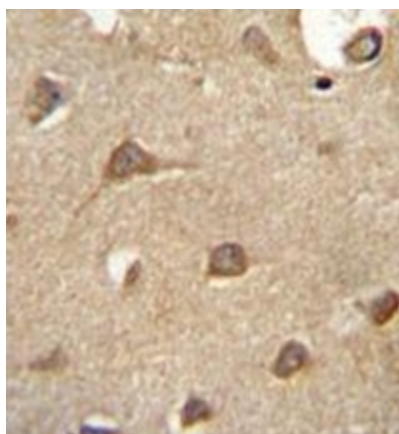
Protein Families: Transmembrane

Protein Pathways: Purine metabolism, Pyrimidine metabolism

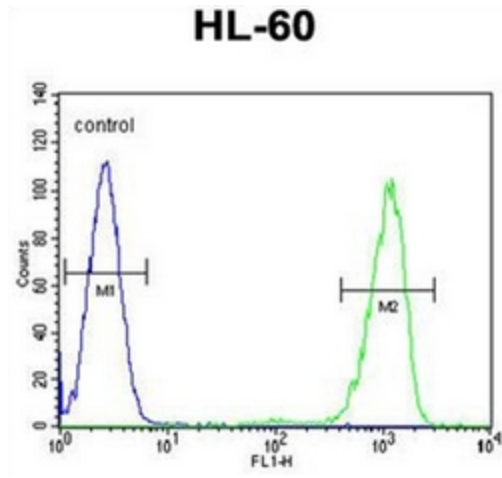
Product images:



Western blot analysis of CD39L3 / ENTPD3 Antibody (C-term) in HL-60 cell line lysates (35ug/lane). This demonstrates the ENTPD3 antibody detected the ENTPD3 protein (arrow).



Formalin fixed and paraffin embedded human brain tissue reacted with CD39L3 / ENTPD3 Antibody (C-term) followed by peroxidase conjugation of the secondary antibody and DAB staining.



Flow cytometric analysis of HL-60 cells using CD39L3 / ENTPD3 Antibody (C-term) (right histogram) compared to a negative control cell (left histogram). FITC-conjugated goat-anti-rabbit secondary antibodies were used for the analysis.