

## Product datasheet for **AP51435PU-N**

### ENTHD1 (N-term) Rabbit Polyclonal Antibody

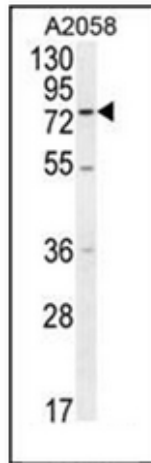
#### Product data:

Product Type:	Primary Antibodies
Applications:	FC, WB
Recommended Dilution:	<b>ELISA:</b> 1/1,000. <b>Western Blot:</b> 1/100-1/500. <b>Flow Cytometry:</b> 1/10-1/50.
Reactivity:	Human
Host:	Rabbit
Isotype:	Ig
Clonality:	Polyclonal
Immunogen:	KLH conjugated synthetic peptide between 176-206 amino acids from the N-terminal region of Human ENTHD1
Specificity:	This antibody recognizes Human ENTHD1 (N-term).
Formulation:	PBS containing 0.09% (W/V) Sodium Azide as preservative State: Aff - Purified State: Liquid purified Ig fraction
Concentration:	lot specific
Purification:	Affinity Chromatography on Protein A
Conjugation:	Unconjugated
Storage:	Store undiluted at 2-8°C for one month or (in aliquots) at -20°C for longer. Avoid repeated freezing and thawing.
Stability:	Shelf life: one year from despatch.
Gene Name:	ENTH domain containing 1
Database Link:	<a href="#">Entrez Gene 150350 Human Q8IYW4</a>
Synonyms:	dJ370M22.3; Epsin-2B; FLJ25421
Note:	<b>Molecular Weight:</b> 67538 Da

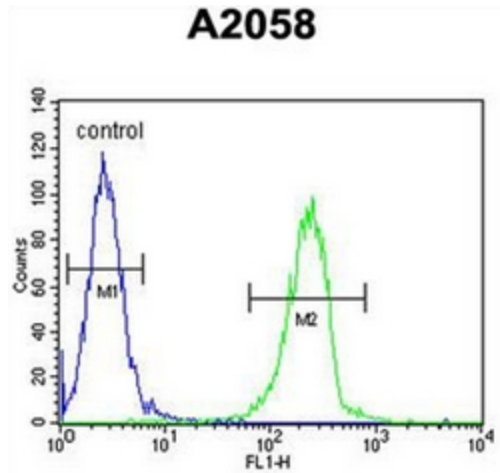


[View online »](#)

Product images:



Western blot analysis of ENTHD1 Antibody (N-term) in A2058 cell line lysates (35ug/lane). This demonstrates the ENTHD1 antibody detected the ENTHD1 protein (arrow).



Flow cytometric analysis of A2058 cells using ENTHD1 Antibody (N-term) (right histogram) compared to a negative control cell (left histogram). FITC-conjugated goat-anti-rabbit secondary antibodies were used for the analysis.