

Product datasheet for **AP51434PU-N**

ENSA (Center) Rabbit Polyclonal Antibody

Product data:

Product Type:	Primary Antibodies
Applications:	FC, WB
Recommended Dilution:	ELISA: 1/1,000. Western Blot: 1/100-1/500. Flow Cytometry: 1/10-1/50.
Reactivity:	Human, Mouse
Host:	Rabbit
Isotype:	Ig
Clonality:	Polyclonal
Immunogen:	KLH conjugated synthetic peptide between 46-74 amino acids from the Central region of Human ENSA.
Specificity:	This antibody recognizes Human and Mouse Alpha-endosulfine (ENSA) (Center).
Formulation:	PBS containing 0.09% (W/V) Sodium Azide as preservative State: Aff - Purified State: Liquid purified Ig fraction
Concentration:	lot specific
Purification:	Affinity Chromatography on Protein A
Conjugation:	Unconjugated
Storage:	Store undiluted at 2-8°C for one month or (in aliquots) at -20°C for longer. Avoid repeated freezing and thawing.
Stability:	Shelf life: one year from despatch.
Gene Name:	endosulfine alpha
Database Link:	Entrez Gene 56205 Mouse Entrez Gene 2029 Human O43768



[View online »](#)

Background:

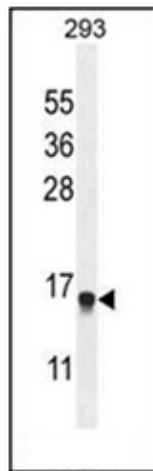
ENSA belongs to a highly conserved cAMP-regulated phosphoprotein (ARPP) family. This protein was identified as an endogenous ligand for the sulfonylurea receptor, ABCC8/SUR1. ABCC8 is the regulatory subunit of the ATP-sensitive potassium (KATP) channel, which is located on the plasma membrane of pancreatic beta cells and plays a key role in the control of insulin release from pancreatic beta cells. This protein is thought to be an endogenous regulator of KATP channels. In vitro studies have demonstrated that this protein modulates insulin secretion through the interaction with KATP channel, and this gene has been proposed as a candidate gene for type 2 diabetes.

Synonyms:

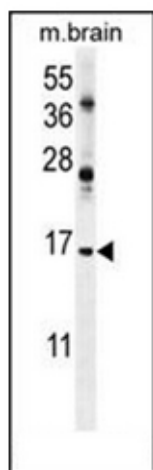
ARPP-19e

Note:**Molecular Weight:** 13389 Da**Protein Families:**

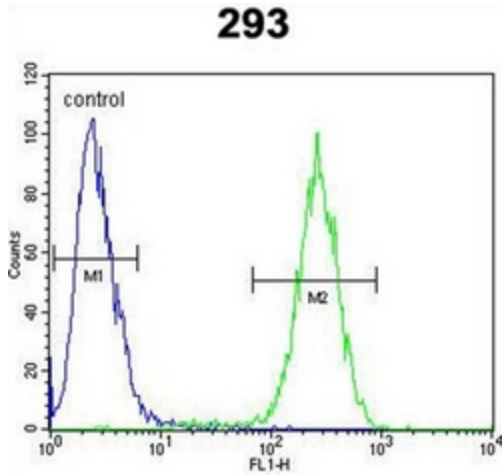
Druggable Genome

Product images:

Western blot analysis of ENSA Antibody in 293 cell line lysates (35ug/lane). This demonstrates the ENSA antibody detected the ENSA protein (arrow).



Western blot analysis of ENSA Antibody in mouse brain tissue lysates (35ug/lane). This demonstrates the ENSA antibody detected the ENSA protein (arrow).



Flow cytometric analysis of 293 cells using ENSA Antibody (right histogram) compared to a negative control cell (left histogram). FITC-conjugated goat-anti-rabbit secondary antibodies were used for the analysis.