

Product datasheet for **AP51433PU-N**

Aminopeptidase A (ENPEP) (C-term) Rabbit Polyclonal Antibody

Product data:

Product Type:	Primary Antibodies
Applications:	FC, IHC, WB
Recommended Dilution:	ELISA: 1/1,000. Western Blot: 1/100-1/500. Flow Cytometry: 1/10-1/50. Immunohistochemistry on Paraffin Sections: 1/50-1/100.
Reactivity:	Human
Host:	Rabbit
Isotype:	Ig
Clonality:	Polyclonal
Immunogen:	KLH conjugated synthetic peptide between 906-938 amino acids from the C-terminal region of Human ENPEP.
Specificity:	This antibody recognizes Human CD249 / Glutamyl aminopeptidase (C-term).
Formulation:	PBS containing 0.09% (W/V) Sodium Azide as preservative State: Aff - Purified State: Liquid purified Ig fraction
Concentration:	lot specific
Purification:	Affinity Chromatography on Protein A
Conjugation:	Unconjugated
Storage:	Store undiluted at 2-8°C for one month or (in aliquots) at -20°C for longer. Avoid repeated freezing and thawing.
Stability:	Shelf life: one year from despatch.
Gene Name:	glutamyl aminopeptidase
Database Link:	Entrez Gene 2028 Human Q07075
Background:	ENPEP appears to have a role in the catabolic pathway of the renin-angiotensin system. Probably plays a role in regulating growth and differentiation of early B-lineage cells.
Synonyms:	EAP, Aminopeptidase A, ENPEP



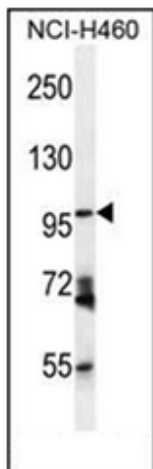
[View online »](#)

Note: **Molecular Weight:** 109244 Da

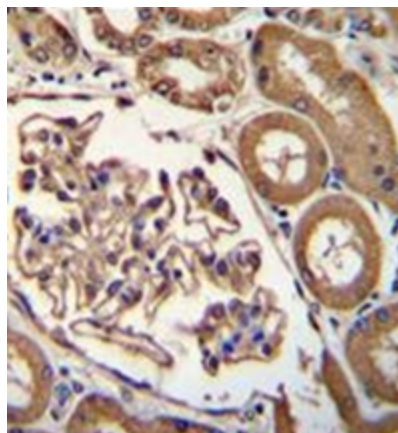
Protein Families: Druggable Genome, ES Cell Differentiation/IPS, Protease, Transmembrane

Protein Pathways: Renin-angiotensin system

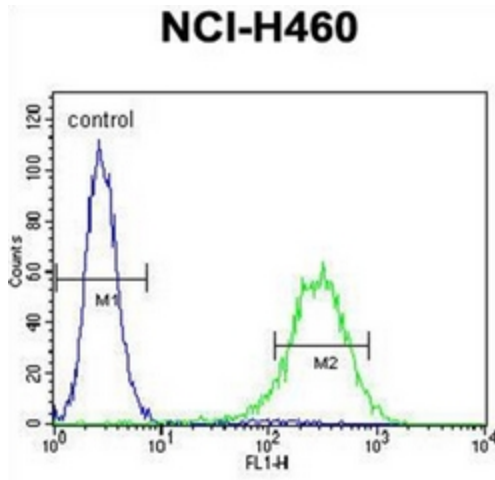
Product images:



Western blot analysis of CD249 / Glutamyl aminopeptidase Antibody (C-term) in NCI-H460 cell line lysates (35ug/lane). This demonstrates the ENPEP antibody detected the ENPEP protein (arrow).



Formalin fixed and paraffin embedded human kidney tissue reacted with CD249 / Glutamyl aminopeptidase Antibody (C-term) followed by peroxidase conjugation of the secondary antibody and DAB staining.



Flow cytometric analysis of NCI-H460 cells using CD249 / Glutaryl aminopeptidase Antibody (C-term) (right histogram) compared to a negative control cell (left histogram). FITC-conjugated goat-anti-rabbit secondary antibodies were used for the analysis.