

Product datasheet for **AP51431PU-N**

ENOSF1 (N-term) Rabbit Polyclonal Antibody

Product data:

Product Type:	Primary Antibodies
Applications:	WB
Recommended Dilution:	ELISA: 1/1,000. Western Blot: 1/100-1/500.
Reactivity:	Human
Host:	Rabbit
Isotype:	Ig
Clonality:	Polyclonal
Immunogen:	KLH conjugated synthetic peptide between 62-92 amino acids from the N-terminal region of Human ENOSF1
Specificity:	This antibody recognizes Human ENOSF1 (N-term).
Formulation:	PBS containing 0.09% (W/V) Sodium Azide as preservative State: Aff - Purified State: Liquid purified Ig fraction
Concentration:	lot specific
Purification:	Affinity Chromatography on Protein A
Conjugation:	Unconjugated
Storage:	Store undiluted at 2-8°C for one month or (in aliquots) at -20°C for longer. Avoid repeated freezing and thawing.
Stability:	Shelf life: one year from despatch.
Gene Name:	enolase superfamily member 1
Database Link:	Entrez Gene 55556 Human Q7L5Y1



[View online »](#)

Background:

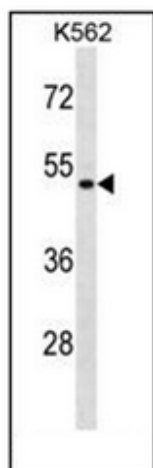
ENOSF1 was originally identified as a naturally occurring antisense transcript to the human thymidylate synthase gene. Alternate splice variants have been described, one of which (named rTSalpha) represents an alternate 3' UTR that is complementary to the 3' UTR and terminal intron of the thymidylate synthase (TS) RNA and down-regulates TS expression. Other transcript variants (rTSbeta and rTSgamma) do not overlap the TS locus. The function of this gene appears to be primarily to regulate expression of the TS locus both via the antisense transcript as well as through the encoded proteins. [provided by RefSeq].

Synonyms:

TYMSAS

Note:

Molecular Weight: 49786 Da

Product images:


Western blot analysis of ENOSF1 Antibody (N-term) in K562 cell line lysates (35ug/lane). This demonstrates the ENOSF1 antibody detected the ENOSF1 protein (arrow).