

Product datasheet for **AP51429PU-N**

CD105 (ENG) (Center) Rabbit Polyclonal Antibody

Product data:

Product Type:	Primary Antibodies
Applications:	WB
Recommended Dilution:	ELISA: 1/1000. Western Blot: 1/100-1/500.
Reactivity:	Human
Host:	Rabbit
Isotype:	Ig
Clonality:	Polyclonal
Immunogen:	KLH conjugated synthetic peptide between 272-302 amino acids from the Central region of Human CD105 / Endoglin.
Specificity:	This antibody recognizes Human CD105 / Endoglin (Center).
Formulation:	PBS containing 0.09% (W/V) Sodium Azide as preservative State: Aff - Purified State: Liquid purified Ig fraction
Concentration:	lot specific
Purification:	Affinity Chromatography on Protein A
Conjugation:	Unconjugated
Storage:	Store undiluted at 2-8°C for one month or (in aliquots) at -20°C for longer. Avoid repeated freezing and thawing.
Stability:	Shelf life: one year from despatch.
Gene Name:	endoglin
Database Link:	Entrez Gene 2022 Human P17813



[View online »](#)

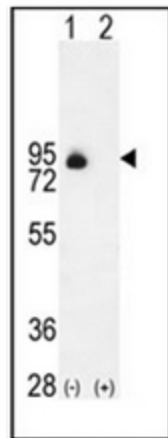
Background: This gene encodes a homodimeric transmembrane protein which is a major glycoprotein of the vascular endothelium. This protein is a component of the transforming growth factor beta receptor complex and it binds TGF β 1 and TGF β 3 with high affinity. Mutations in this gene cause hereditary hemorrhagic telangiectasia, also known as Osler-Rendu-Weber syndrome 1, an autosomal dominant multisystemic vascular dysplasia. Alternatively spliced transcript variants encoding different isoforms have been found for this gene.

Synonyms: ENG, END, HHT1, ORW, ORW1

Note: **Molecular Weight:** 70578 Da

Protein Families: Druggable Genome, ES Cell Differentiation/IPS, Transmembrane

Product images:



Western blot analysis of ENG (arrow) using CD105 / Endoglin Antibody. 293 cell lysates (2 μ g/lane) either nontransfected (Lane 1) or transiently transfected (Lane 2) with the ENG gene.