

Product datasheet for **AP51427PU-N**

EMG1 (Center) Rabbit Polyclonal Antibody

Product data:

Product Type:	Primary Antibodies
Applications:	FC, WB
Recommended Dilution:	ELISA: 1/1000. Western Blot: 1/100-1/500. Flow Cytometry: 1/10-1/50.
Reactivity:	Human
Host:	Rabbit
Isotype:	Ig
Clonality:	Polyclonal
Immunogen:	KLH conjugated synthetic peptide between 111-140 amino acids from the Central region of Human EMG1
Specificity:	This antibody recognizes Human EMG1 / C2F (Center).
Formulation:	PBS containing 0.09% (W/V) Sodium Azide as preservative State: Aff - Purified State: Liquid purified Ig fraction
Concentration:	lot specific
Purification:	Affinity Chromatography on Protein A
Conjugation:	Unconjugated
Storage:	Store undiluted at 2-8°C for one month or (in aliquots) at -20°C for longer. Avoid repeated freezing and thawing.
Stability:	Shelf life: one year from despatch.
Gene Name:	EMG1, N1-specific pseudouridine methyltransferase
Database Link:	Entrez Gene 10436 Human Q92979
Background:	This gene encodes an essential, conserved eukaryotic protein involved in ribosome biogenesis. In yeast, the related protein is a component of the small subunit processome and is essential for biogenesis of the ribosomal 40S subunit. A mutation in this gene has been associated with Bowen-Conradi syndrome.

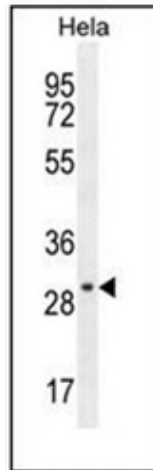


[View online »](#)

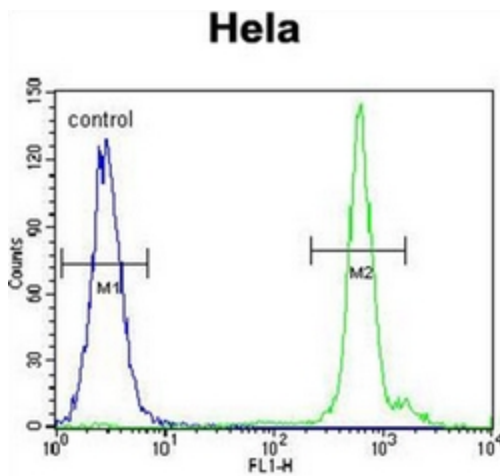
Synonyms: NEP1

Note: **Molecular Weight:** 26720 Da

Product images:



Western blot analysis of EMG1 / C2F Antibody in HeLa cell line lysates (35ug/lane). This demonstrates the EMG1 antibody detected the EMG1 protein (arrow).



Flow cytometric analysis of HeLa cells using EMG1 / C2F Antibody (right histogram) compared to a negative control cell (left histogram). FITC-conjugated goat-anti-rabbit secondary antibodies were used for the analysis.