

Product datasheet for **AP51426PU-N**

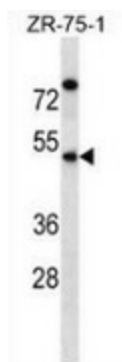
EME2 (C-term) Rabbit Polyclonal Antibody

Product data:

Product Type:	Primary Antibodies
Applications:	WB
Recommended Dilution:	Western blot: 1/100-1/500. Enzyme immunoassay: 1/1000.
Reactivity:	Human
Host:	Rabbit
Isotype:	Ig
Clonality:	Polyclonal
Immunogen:	Synthetic peptide - KLH conjugated - corresponding to the C-terminal region (between 248-278aa) of human EME2.
Specificity:	This antibody recognizes EME2 at C-term.
Formulation:	PBS with 0.09% (W/V) Sodium azide State: Aff - Purified State: Liquid purified Ig fraction
Concentration:	lot specific
Purification:	Purified through a Protein A column followed by peptide affinity purification
Conjugation:	Unconjugated
Storage:	Store undiluted at 2-8°C for one month or (in aliquots) at -20°C for longer. Avoid repeated freezing and thawing.
Stability:	Shelf life: one year from despatch.
Gene Name:	essential meiotic structure-specific endonuclease subunit 2
Database Link:	Entrez Gene 197342 Human A4GXA9
Background:	EME2 forms a heterodimer with MUS81 (MIM 606591) that functions as an XPF (MIM 278760)-type flap/fork endonuclease in DNA repair [<i>Ciccia et al., 2007; PubMed 17289582</i>].
Synonyms:	FLJ00151; gs125
Note:	Molecular Weight: 41207 Da



[View online »](#)

Product images:

Western blot analysis in ZR-75-1 cell line lysates (35ug/lane) using EME2 antibody. (C-term). This demonstrates the EME2 antibody detected the EME2 protein (arrow).