

Product datasheet for **AP51423PU-N**

ELOVL7 (C-term) Rabbit Polyclonal Antibody

Product data:

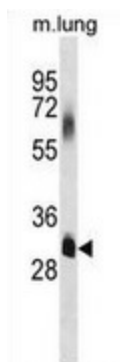
Product Type:	Primary Antibodies
Applications:	WB
Recommended Dilution:	Western blot: 1/100-1/500. Enzyme immunoassay: 1/1000.
Reactivity:	Human, Mouse
Host:	Rabbit
Isotype:	Ig
Clonality:	Polyclonal
Immunogen:	Synthetic peptide - KLH conjugated - corresponding to the C-terminal region (between 243-273aa) of human ELOVL7.
Specificity:	This antibody recognizes ELOVL7 at C-term.
Formulation:	PBS with 0.09% (W/V) Sodium azide State: Aff - Purified State: Liquid purified Ig fraction
Concentration:	lot specific
Purification:	Purified through a Protein A column followed by peptide affinity purification
Conjugation:	Unconjugated
Storage:	Store undiluted at 2-8°C for one month or (in aliquots) at -20°C for longer. Avoid repeated freezing and thawing.
Stability:	Shelf life: one year from despatch.
Gene Name:	ELOVL fatty acid elongase 7
Database Link:	Entrez Gene 74559 Mouse Entrez Gene 79993 Human A1L3X0
Background:	ELOVL7 could be implicated in synthesis of very long chain fatty acids and sphingolipids (By similarity).
Synonyms:	FLJ23563
Note:	Molecular Weight: 33356 Da



[View online »](#)

Protein Families: Transmembrane

Product images:



Western blot analysis in mouse lung tissue lysates (35ug/lane) using ELOVL7 antibody. (C-term). This demonstrates the ELOVL7 antibody detected the ELOVL7 protein (arrow).