

Product datasheet for **AP51422PU-N**

ELOVL5 (C-term) Rabbit Polyclonal Antibody

Product data:

Product Type:	Primary Antibodies
Applications:	FC, WB
Recommended Dilution:	Flow cytometry: 1/10-1/50. Western blot: 1/100-1/500. Enzyme immunoassay: 1/1000.
Reactivity:	Human
Host:	Rabbit
Isotype:	Ig
Clonality:	Polyclonal
Immunogen:	Synthetic peptide - KLH conjugated - corresponding to the C-terminal region (between 270-299aa) of human ELOVL5.
Specificity:	This antibody recognizes ELOVL5 at C-term.
Formulation:	PBS with 0.09% (W/V) Sodium azide State: Aff - Purified State: Liquid purified Ig fraction
Concentration:	lot specific
Purification:	Purified through a Protein A column followed by peptide affinity purification
Conjugation:	Unconjugated
Storage:	Store undiluted at 2-8°C for one month or (in aliquots) at -20°C for longer. Avoid repeated freezing and thawing.
Stability:	Shelf life: one year from despatch.
Gene Name:	ELOVL fatty acid elongase 5
Database Link:	Entrez Gene 60481 Human Q9NYP7
Background:	ELOVL5 plays a role in elongation of long-chain polyunsaturated fatty acids.
Synonyms:	ELOVL2, PRO0530, Fatty acid elongase 1, hELO1, 3-keto acyl-CoA synthase ELOVL5
Note:	Molecular Weight: 35293 Da

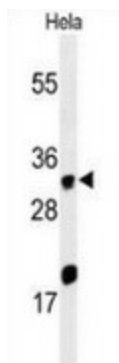


[View online »](#)

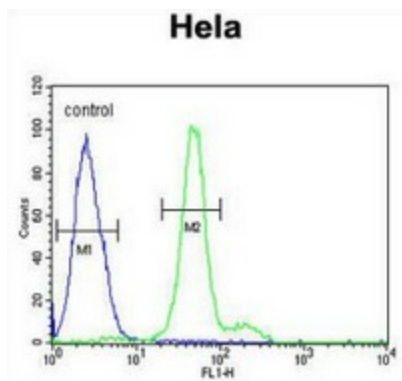
Protein Families: Transmembrane

Protein Pathways: Biosynthesis of unsaturated fatty acids

Product images:



Western blot analysis of ELOVL5 (arrow) in HeLa cell line lysates (35ug/lane) using ELOVL5 antibody. (C-term).



Flow cytometric analysis of HeLa cells (right histogram) compared to a negative control cell (left histogram) using ELOVL5 antibody. (C-term), followed by FITC-conjugated goat-anti-rabbit secondary antibodies.