

Product datasheet for **AP51421PU-N**

ELOVL5 (C-term) Rabbit Polyclonal Antibody

Product data:

Product Type:	Primary Antibodies
Applications:	WB
Recommended Dilution:	ELISA: 1/1000. Western Blot: 1/100-1/500.
Reactivity:	Human
Host:	Rabbit
Isotype:	Ig
Clonality:	Polyclonal
Immunogen:	KLH conjugated synthetic peptide between 247-277 amino acids from the C-terminal region of Human ELOVL5.
Specificity:	This antibody recognizes Human ELOVL5 (C-term).
Formulation:	PBS containing 0.09% (W/V) sodium azide as preservative State: Aff - Purified State: Liquid purified Ig fraction
Concentration:	lot specific
Purification:	Affinity Chromatography on Protein A
Conjugation:	Unconjugated
Storage:	Store undiluted at 2-8°C for one month or (in aliquots) at -20°C for longer. Avoid repeated freezing and thawing.
Stability:	Shelf life: one year from despatch.
Gene Name:	ELOVL fatty acid elongase 5
Database Link:	Entrez Gene 60481 Human Q9NYP7
Background:	ELOVL5 plays a role in elongation of long-chain polyunsaturated fatty acids (Leonard et al., 2000 [PubMed 10970790]).
Synonyms:	ELOVL2, PRO0530, Fatty acid elongase 1, hELO1, 3-keto acyl-CoA synthase ELOVL5
Note:	Molecular Weight: 35293 Da

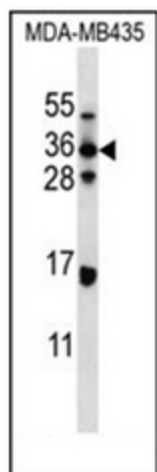


[View online »](#)

Protein Families: Transmembrane

Protein Pathways: Biosynthesis of unsaturated fatty acids

Product images:



Western blot analysis of ELOVL5 Antibody (C-term) in MDA-MB435 cell line lysates (35ug/lane). This demonstrates the ELOVL5 antibody detected the ELOVL5 protein (arrow).