

Product datasheet for **AP51420PU-N**

ELOVL4 (C-term) Rabbit Polyclonal Antibody

Product data:

Product Type:	Primary Antibodies
Applications:	WB
Recommended Dilution:	ELISA: 1/1000. Western Blot: 1/100-1/500.
Reactivity:	Human
Host:	Rabbit
Isotype:	Ig
Clonality:	Polyclonal
Immunogen:	KLH conjugated synthetic peptide between 285-314 amino acids from the C-terminal region of Human ELOVL4.
Specificity:	This antibody recognizes Human ELOVL4 (C-term).
Formulation:	PBS containing 0.09% (W/V) sodium azide as preservative State: Aff - Purified State: Liquid purified Ig fraction
Concentration:	lot specific
Purification:	Affinity Chromatography on Protein A
Conjugation:	Unconjugated
Storage:	Store undiluted at 2-8°C for one month or (in aliquots) at -20°C for longer. Avoid repeated freezing and thawing.
Stability:	Shelf life: one year from despatch.
Gene Name:	ELOVL fatty acid elongase 4
Database Link:	Entrez Gene 6785 Human Q9GZR5



[View online »](#)

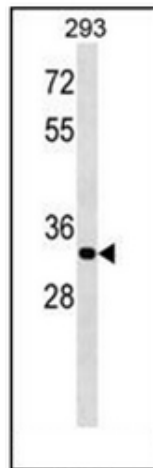
Background: ELOVL4 is a membrane-bound protein which is a member of the ELO family, proteins which participate in the biosynthesis of fatty acids. Consistent with the expression of the encoded protein in photoreceptor cells of the retina, mutations and small deletions in this gene are associated with Stargardt-like macular dystrophy (STGD3) and autosomal dominant Stargardt-like macular dystrophy (ADMD), also referred to as autosomal dominant atrophic macular degeneration.

Synonyms: ADMD; FLJ17667; FLJ92876; STGD2; STGD3

Note: **Molecular Weight:** 36829 Da

Protein Families: Transmembrane

Product images:



Western blot analysis of ELOVL4 Antibody (C-term) in 293 cell line lysates (35ug/lane). This demonstrates the ELOVL4 antibody detected the ELOVL4 protein (arrow).