

Product datasheet for **AP51419PU-N**

ELOVL2 (N-term) Rabbit Polyclonal Antibody

Product data:

Product Type:	Primary Antibodies
Applications:	FC, IHC, WB
Recommended Dilution:	Flow cytometry: 1/10-1/50. Immunohistochemistry on Paraffin sections: 1/50-1/100. Western blot: 1/100-1/500. Enzyme immunoassay: 1/1000.
Reactivity:	Human
Host:	Rabbit
Isotype:	Ig
Clonality:	Polyclonal
Immunogen:	Synthetic peptide - KLH conjugated - corresponding to the N-terminal region (between 7-36aa) of human ELOVL2.
Specificity:	This antibody recognizes ELOVL2 at N-term.
Formulation:	PBS with 0.09% (W/V) Sodium azide State: Aff - Purified State: Liquid purified Ig fraction
Concentration:	lot specific
Purification:	Purified through a Protein A column followed by peptide affinity purification
Conjugation:	Unconjugated
Storage:	Store undiluted at 2-8°C for one month or (in aliquots) at -20°C for longer. Avoid repeated freezing and thawing.
Stability:	Shelf life: one year from despatch.
Gene Name:	ELOVL fatty acid elongase 2
Database Link:	Entrez Gene 54898 Human Q9NXB9



[View online »](#)

Background: ELOVL2 could be implicated in tissue-specific synthesis of very long chain fatty acids and sphingolipids. This protein may catalyze one or both of the reduction reaction in fatty acid elongation, i.e., conversion of beta-ketoacyl CoA to beta-hydroxyacyl CoA or reduction of trans-2-enoyl CoA to the saturated acyl CoA derivative (By similarity).

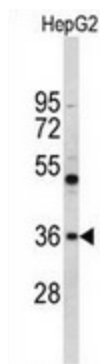
Synonyms: SSC2

Note: **Molecular Weight:** 34585 Da

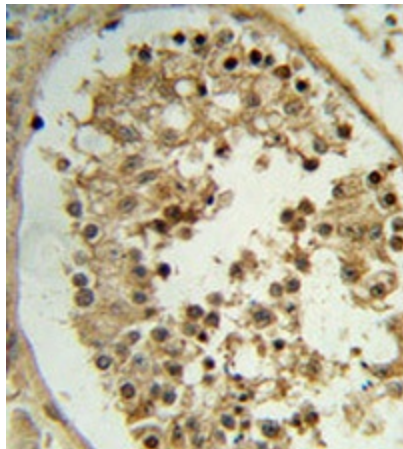
Protein Families: Transmembrane

Protein Pathways: Biosynthesis of unsaturated fatty acids

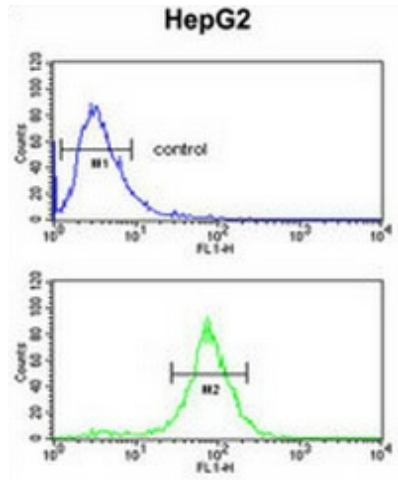
Product images:



Western blot analysis of ELOVL2 (arrow) in HepG2 cell line lysates (35ug/lane) using ELOVL2 antibody. (N-term).



Immunohistochemistry analysis of human testis tissue (Formalin-fixed, Paraffin-embedded) using ELOVL2 antibody. (N-term), peroxidase-conjugated to the secondary antibody, followed by DAB staining. This data demonstrates the use of this antibody for immunohistochemistry; clinical relevance has not been evaluated.



Flow cytometry of HepG2 cells (bottom histogram) compared to a negative control cell (top histogram) using ELOVL2 antibody. (N-term), followed by FITC-conjugated goat-anti-rabbit secondary antibodies.