

Product datasheet for **AP51418PU-N**

ELMO2 (Center) Rabbit Polyclonal Antibody

Product data:

Product Type:	Primary Antibodies
Applications:	IHC, WB
Recommended Dilution:	ELISA: 1/1000. Western Blot: 1/100-1/500. Immunohistochemistry on Paraffin Sections: 1/50-1/100.
Reactivity:	Human
Host:	Rabbit
Isotype:	Ig
Clonality:	Polyclonal
Immunogen:	KLH conjugated synthetic peptide between 330-357 amino acids from the Central region of Human ELMO2
Specificity:	This antibody recognizes Human ELMO2 (Center).
Formulation:	PBS containing 0.09% (W/V) sodium azide as preservative State: Aff - Purified State: Liquid purified Ig fraction
Concentration:	lot specific
Purification:	Affinity Chromatography on Protein A
Conjugation:	Unconjugated
Storage:	Store undiluted at 2-8°C for one month or (in aliquots) at -20°C for longer. Avoid repeated freezing and thawing.
Stability:	Shelf life: one year from despatch.
Gene Name:	engulfment and cell motility 2
Database Link:	Entrez Gene 63916 Human Q96JJ3
Background:	The protein encoded by this gene interacts with the dedicator of cyto-kinesis 1 protein. Similarity to a C. elegans protein suggests that this protein may function in phagocytosis of apoptotic cells and in cell migration. Alternative splicing results in multiple transcript variants encoding the same protein.

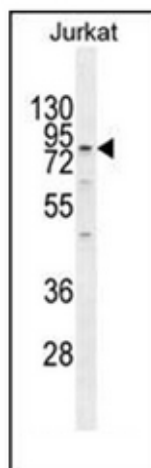


[View online »](#)

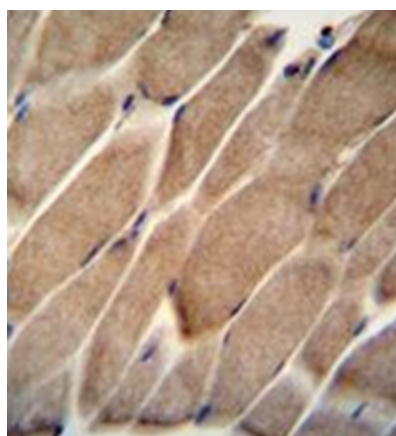
Synonyms: ELMO 2, ELMO-2, CED12A, CED-12A, KIAA1834

Note: **Molecular Weight:** 82615 Da

Product images:



Western blot analysis of ELMO2 Antibody in Jurkat cell line lysates (35ug/lane). This demonstrates the ELMO2 antibody detected the ELMO2 protein (arrow).



Formalin fixed and paraffin embedded human skeletal muscle reacted with ELMO2 Antibody followed by peroxidase conjugation of the secondary antibody and DAB staining.