

Product datasheet for **AP51417PU-N**

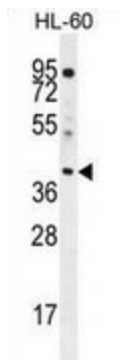
ELMOD2 (C-term) Rabbit Polyclonal Antibody

Product data:

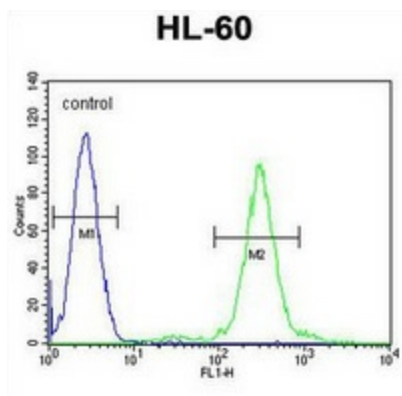
Product Type:	Primary Antibodies
Applications:	FC, WB
Recommended Dilution:	Western blot: 1/100-1/500. Flow cytometry: 1/10-1/50. Enzyme immunoassay: 1/1000.
Reactivity:	Human
Host:	Rabbit
Isotype:	Ig
Clonality:	Polyclonal
Immunogen:	Synthetic peptide - KLH conjugated - corresponding to the C-terminal region (between 258-287aa) of human ELMOD2.
Specificity:	This antibody recognizes ELMOD2 at C-term.
Formulation:	PBS with 0.09% (W/V) Sodium azide State: Aff - Purified State: Liquid purified Ig fraction
Concentration:	lot specific
Purification:	Purified through a Protein A column followed by peptide affinity purification
Conjugation:	Unconjugated
Gene Name:	ELMO domain containing 2
Database Link:	Entrez Gene 255520 Human Q8IZ81
Background:	The ELMOD2 gene encodes one of six engulfment and motility (ELMO) domain-containing proteins. This gene is thought to play a role in antiviral responses. Mutations in this gene may be involved in the cause of familial idiopathic pulmonary fibrosis.
Synonyms:	9830169G11Rik; MGC10084
Note:	Molecular Weight: 34961 Da



[View online »](#)

Product images:

Western blot analysis in HL-60 cell line lysates (35ug/lane) using ELMOD2 antibody. (C-term). This demonstrates the ELMOD2 antibody detected the ELMOD2 protein (arrow).



Flow cytometric analysis of HL-60 cells (right histogram) compared to a negative control cell (left histogram) using ELMOD2 antibody. (C-term), followed by FITC-conjugated goat-anti-rabbit secondary.