

## Product datasheet for **AP51416PU-N**

### ELL2 (C-term) Rabbit Polyclonal Antibody

#### Product data:

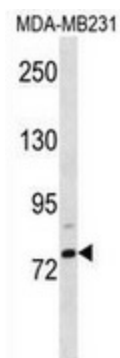
Product Type:	Primary Antibodies
Applications:	WB
Recommended Dilution:	<b>Western blot:</b> 1/100-1/500. Enzyme immunoassay: 1/1000.
Reactivity:	Human
Host:	Rabbit
Isotype:	Ig
Clonality:	Polyclonal
Immunogen:	Synthetic peptide - KLH conjugated - corresponding to the C-terminal region (between 449-479aa) of human ELL2.
Specificity:	This antibody recognizes ELL2 at C-term.
Formulation:	PBS with 0.09% (W/V) Sodium azide State: Aff - Purified State: Liquid purified Ig fraction
Concentration:	lot specific
Purification:	Purified through a Protein A column followed by peptide affinity purification
Conjugation:	Unconjugated
Storage:	Store undiluted at 2-8°C for one month or (in aliquots) at -20°C for longer. Avoid repeated freezing and thawing.
Stability:	Shelf life: one year from despatch.
Gene Name:	elongation factor for RNA polymerase II 2
Database Link:	<a href="#">Entrez Gene 22936 Human</a> <a href="#">O00472</a>
Background:	Elongation factor that can increase the catalytic rate of RNA polymerase II transcription by suppressing transient pausing by the polymerase at multiple sites along the DNA.
Synonyms:	ELL2
Note:	<b>Molecular Weight:</b> 72324 Da



[View online »](#)

Protein Families: Transcription Factors

### Product images:



Western blot analysis in MDA-MB231 cell line lysates (35ug/lane) using ELL2 antibody. (C-term). This demonstrates the ELL2 antibody detected the ELL2 protein (arrow).