

Product datasheet for **AP51415PU-N**

ELL (C-term) Rabbit Polyclonal Antibody

Product data:

Product Type:	Primary Antibodies
Applications:	WB
Recommended Dilution:	This antibody is suitable for Enzyme immunoassay and Western blotting. The suggested dilution is: Western blot: 1/100-1/500.
Reactivity:	Human, Mouse
Host:	Rabbit
Isotype:	Ig
Clonality:	Polyclonal
Immunogen:	Synthetic peptide - KLH conjugated - corresponding to the C-terminal region (between 523-553aa) of human ELL.
Specificity:	This antibody recognizes ELL at C-term.
Formulation:	PBS with 0.09% (W/V) Sodium azide State: Aff - Purified State: Liquid purified Ig fraction
Concentration:	lot specific
Purification:	Purified through a protein A column followed by peptide affinity purification
Conjugation:	Unconjugated
Storage:	Store the antibody undiluted at 2-8°C for one month or (in aliquots) at -20°C for longer. Avoid repeated freezing and thawing.
Stability:	Shelf life: one year from despatch.
Gene Name:	elongation factor for RNA polymerase II
Database Link:	Entrez Gene 13716 Mouse Entrez Gene 8178 Human P55199
Background:	Elongation factor that can increase the catalytic rate of RNA polymerase II transcription by suppressing transient pausing by the polymerase at multiple sites along the DNA
Synonyms:	C19orf17

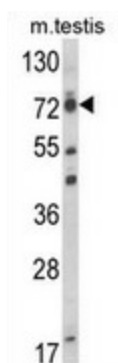


[View online »](#)

Note: **Molecular Weight:** 68265 Da

Protein Families: Transcription Factors

Product images:



Western blot analysis of ELL (arrow) in mouse testis tissue lysates (35ug/lane) using ELL antibody. (C-term).