

Product datasheet for **AP51414PU-N**

ELL (C-term) Rabbit Polyclonal Antibody

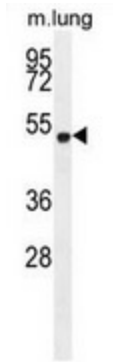
Product data:

Product Type:	Primary Antibodies
Applications:	WB
Recommended Dilution:	This antibody is suitable for Western blotting . The suggested dilution is: 1/100-1/500.
Reactivity:	Human, Mouse
Host:	Rabbit
Isotype:	Ig
Clonality:	Polyclonal
Immunogen:	Synthetic peptide - KLH conjugated - corresponding to the C-terminal region (between 523-553aa) of human ELL.
Specificity:	This antibody detects ELL at C-term.
Formulation:	PBS with 0.09% (W/V) Sodium Azide. State: Aff - Purified State: Liquid purified Ig fraction
Concentration:	lot specific
Purification:	Purified through a protein A column; followed by peptide affinity purification.
Conjugation:	Unconjugated
Storage:	Store the antibody undiluted at 2-8°C for one month or (in aliquots) at -20°C for longer. Avoid repeated freezing and thawing.
Stability:	Shelf life: one year from despatch.
Gene Name:	elongation factor for RNA polymerase II
Database Link:	Entrez Gene 13716 Mouse Entrez Gene 8178 Human P55199
Synonyms:	C19orf17
Note:	Molecular Weight: 68265 Da
Protein Families:	Transcription Factors

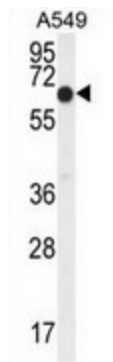


[View online »](#)

Product images:



Western blot analysis in mouse lung tissue lysates (35ug/lane) using ELL antibody. (C-term).



Western blot analysis in A549 cell line lysates (35ug/lane) using ELL antibody. (C-term).