

Product datasheet for **AP51410PU-N**

ELF4 (N-term) Rabbit Polyclonal Antibody

Product data:

Product Type:	Primary Antibodies
Applications:	WB
Recommended Dilution:	This antibody is suitable for Western blotting . The suggested dilution is: 1/100-1/500.
Reactivity:	Human
Host:	Rabbit
Isotype:	Ig
Clonality:	Polyclonal
Immunogen:	Synthetic peptide - KLH conjugated - corresponding to the N-terminal region (between 168-196aa) of human ELF4.
Specificity:	This antibody detects human ELF4 at N-term.
Formulation:	PBS with 0.09% (W/V) Sodium Azide. State: Aff - Purified State: Liquid purified Ig fraction
Concentration:	lot specific
Purification:	Purified through a protein A column; followed by peptide affinity purification.
Conjugation:	Unconjugated
Storage:	Store the antibody undiluted at 2-8°C for one month or (in aliquots) at -20°C for longer. Avoid repeated freezing and thawing.
Stability:	Shelf life: one year from despatch.
Gene Name:	E74 like ETS transcription factor 4
Database Link:	Entrez Gene 2000 Human Q99607
Background:	ELF4 is transcriptional activator that binds to DNA sequences containing the consensus 5'-WGGA-3'. The protein acts synergistically with RUNX1 to transactivate the IL3 promoter. Also transactivates the PRF1 promoter in natural killer (NK) cells. This protein plays a role in the development and function of NK and NK T-cells and in innate immunity.
Synonyms:	ELFR, MEF, E74-like factor 4, Myeloid Elf-1-like factor

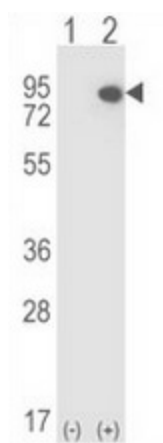


[View online »](#)

Note: **Molecular Weight:** 70730 Da

Protein Families: Transcription Factors

Product images:



Western blot analysis of ELF4 (arrow) using rabbit polyclonal ELF4 antibody. (N-term). 293 cell lysates (2 ug/lane) either nontransfected (Lane 1) or transiently transfected (Lane 2) with the ELF4 gene.