

Product datasheet for **AP51409PU-N**

ESE1 (ELF3) (C-term) Rabbit Polyclonal Antibody

Product data:

Product Type:	Primary Antibodies
Applications:	WB
Recommended Dilution:	ELISA: 1/1000. Western blot: 1/000.
Reactivity:	Human
Host:	Rabbit
Isotype:	Ig
Clonality:	Polyclonal
Immunogen:	KLH Synthetic peptide corresponding to the C-terminal region (between 322-349aa) of Human ELF3.
Specificity:	This antibody detects human ELF3.
Formulation:	PBS with 0.09% (W/V) Sodium Azide. State: Purified State: Liquid purified Ig fraction
Concentration:	lot specific
Purification:	Purified through a protein A column, followed by peptide affinity purification.
Conjugation:	Unconjugated
Storage:	Store the antibody undiluted at 2-8°C for one month or (in aliquots) at -20°C for longer. Avoid repeated freezing and thawing.
Stability:	Shelf life: one year from despatch.
Gene Name:	E74 like ETS transcription factor 3
Database Link:	Entrez Gene 1999 Human P78545
Background:	ESE1 (Epithelium-Specific Ets) is a novel, highly tissue-restricted member of the ets transcription factor/oncogene family, which has features distinct from those of any other ets-related factor. ESE1 binds with high affinity to and transactivates the ets binding site in the promoter of the keratinocyte terminal differentiation marker gene, SPRR2A. ESE1 is a critical regulator of epithelial cell differentiation.



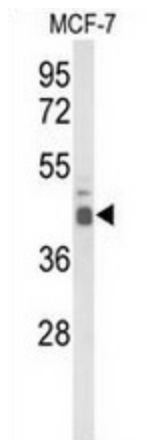
[View online »](#)

Synonyms: Elf-3, ESX, ERT, JEN

Note: **Molecular Weight:** 41454 Da

Protein Families: Transcription Factors

Product images:



Western blot analysis of ELF3 antibody. (C-term) in MCF-7 cell line lysates (35ug/lane).