

Product datasheet for **AP51407PU-N**

ELAVL2 (Center) Rabbit Polyclonal Antibody

Product data:

Product Type:	Primary Antibodies
Applications:	FC, IHC, WB
Recommended Dilution:	ELISA: 1/1000. Western blot: 1/100 - 1/500. Immunohistochemistry on paraffin sections: 1/10 - 1/50. Flow Cytometry: 1/10 - 1/50.
Reactivity:	Human
Host:	Rabbit
Isotype:	Ig
Clonality:	Polyclonal
Immunogen:	KLH conjugated synthetic peptide between 155-184 amino acids from the Central region of human ELAVL2
Specificity:	This antibody reacts to ELAVL2.
Formulation:	PBS State: Aff - Purified State: Liquid purified Ig fraction Preservative: 0.09% (W/V) sodium azide
Concentration:	lot specific
Purification:	Affinity chromatography on Protein A
Conjugation:	Unconjugated
Storage:	Store the antibody undiluted at 2-8°C for one month or (in aliquots) at -20°C for longer. Avoid repeated freezing and thawing.
Stability:	Shelf life: one year from despatch.
Predicted Protein Size:	39504 Da
Gene Name:	ELAV like neuron-specific RNA binding protein 2
Database Link:	Entrez Gene 1993 Human Q12926



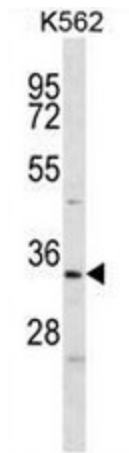
[View online »](#)

Background: The protein encoded by this gene is a neural-specific RNA-binding protein that is known to bind to several 3' UTRs, including its own and also that of FOS and ID. The encoded protein may recognize a GAAA motif in the RNA. Three transcript variants encoding two different isoforms have been found for this gene.

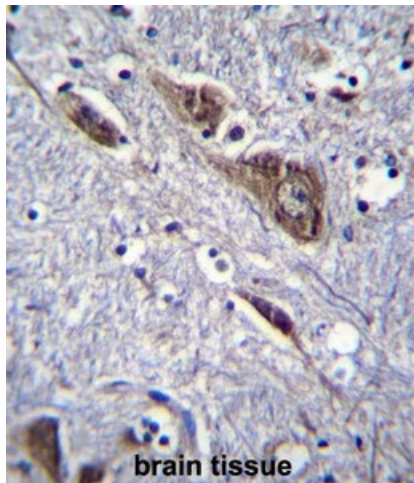
Synonyms: ELAV-like protein 2, Hu-antigen B, Hel-N1

Protein Families: Transcription Factors

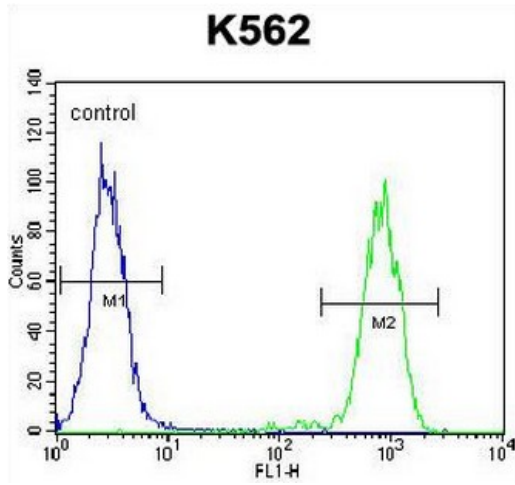
Product images:



ELAVL2 Antibody (Center) western blot analysis in K562 cell line lysates (35ug/lane). This demonstrates the ELAVL2 antibody detected the ELAVL2 protein (arrow).



ELAVL2 Antibody (Center) immunohistochemistry analysis in formalin fixed and paraffin embedded human brain tissue followed by peroxidase conjugation of the secondary antibody and DAB staining. This data demonstrates the use of ELAVL2 Antibody (Center) for immunohistochemistry. Clinical relevance has not been evaluated.



ELAVL2 Antibody (Center) flow cytometric analysis of K562 cells (right histogram) compared to a negative control cell (left histogram). FITC-conjugated goat-anti-rabbit secondary antibodies were used for the analysis.