

Product datasheet for **AP51403PU-N**

EIF4H (Center) Rabbit Polyclonal Antibody

Product data:

Product Type:	Primary Antibodies
Applications:	IHC, WB
Recommended Dilution:	ELISA: 1/1000. Western blot: 1/100 - 1/500. Immunohistochemistry on paraffin sections: 1/10 - 1/50.
Reactivity:	Human
Host:	Rabbit
Isotype:	Ig
Clonality:	Polyclonal
Immunogen:	KLH conjugated synthetic peptide between 126-156 amino acids from the Central region of human EIF4H
Specificity:	This antibody reacts to EIF4H.
Formulation:	PBS State: Aff - Purified State: Liquid purified Ig fraction Preservative: 0.09% (W/V) sodium azide
Concentration:	lot specific
Purification:	Affinity chromatography on Protein A
Conjugation:	Unconjugated
Storage:	Store the antibody undiluted at 2-8°C for one month or (in aliquots) at -20°C for longer. Avoid repeated freezing and thawing.
Stability:	Shelf life: one year from despatch.
Predicted Protein Size:	27385 Da
Gene Name:	eukaryotic translation initiation factor 4H
Database Link:	Entrez Gene 7458 Human Q15056



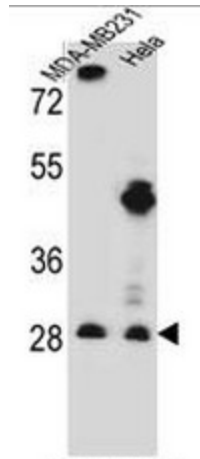
[View online »](#)

Background:

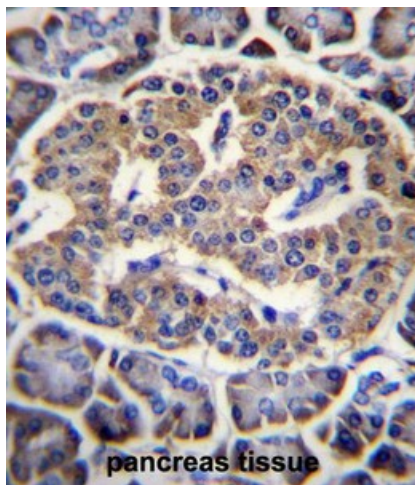
This gene encodes one of the translation initiation factors, which functions to stimulate the initiation of protein synthesis at the level of mRNA utilization. This gene is deleted in Williams syndrome, a multisystem developmental disorder caused by the deletion of contiguous genes at 7q11.23. Alternative splicing of this gene generates 2 transcript variants.

Synonyms:

eIF-4H, KIAA0038, WSCR1

Product images:

EIF4H Antibody (Center) western blot analysis in MDA-MB231, HeLa cell line lysates (35ug/lane). This demonstrates the EIF4H antibody detected the EIF4H protein (arrow).



EIF4H Antibody (Center) immunohistochemistry analysis in formalin fixed and paraffin embedded human pancreas tissue followed by peroxidase conjugation of the secondary antibody and DAB staining. This data demonstrates the use of EIF4H Antibody (Center) for immunohistochemistry. Clinical relevance has not been evaluated.