

Product datasheet for **AP51402PU-N**

EIF4EBP1 (Center) Rabbit Polyclonal Antibody

Product data:

Product Type:	Primary Antibodies
Applications:	IHC, WB
Recommended Dilution:	ELISA: 1/1000. Western Blot: 1/50 - 1/100. Immunohistochemistry on paraffin sections: 1/10 - 1/50.
Reactivity:	Human
Host:	Rabbit
Isotype:	Ig
Clonality:	Polyclonal
Immunogen:	Immunized with a KLH conjugated synthetic peptide between 31-61 amino acids from the Central region of human EIF4EBP1
Specificity:	This antibody reacts to EIF4EBP1.
Formulation:	PBS State: Purified State: Liquid purified Ig fraction Preservative: 0.09% (W/V) sodium azide
Concentration:	lot specific
Purification:	Saturated Ammonium Sulfate (SAS) precipitation
Conjugation:	Unconjugated
Storage:	Store the antibody undiluted at 2-8°C for one month or (in aliquots) at -20°C for longer. Avoid repeated freezing and thawing.
Stability:	Shelf life: one year from despatch.
Predicted Protein Size:	12580 Da
Gene Name:	Homo sapiens eukaryotic translation initiation factor 4E binding protein 1 (EIF4EBP1)
Database Link:	Entrez Gene 1978 Human Q13541



[View online »](#)

Background:

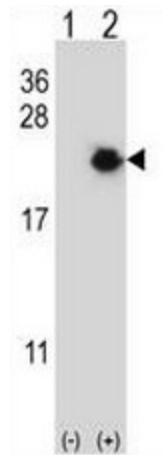
This gene encodes one member of a family of translation repressor proteins. The protein directly interacts with eukaryotic translation initiation factor 4E (eIF4E), which is a limiting component of the multisubunit complex that recruits 40S ribosomal subunits to the 5' end of mRNAs. Interaction of this protein with eIF4E inhibits complex assembly and represses translation. This protein is phosphorylated in response to various signals including UV irradiation and insulin signaling, resulting in its dissociation from eIF4E and activation of mRNA translation. [provided by RefSeq].

Synonyms:

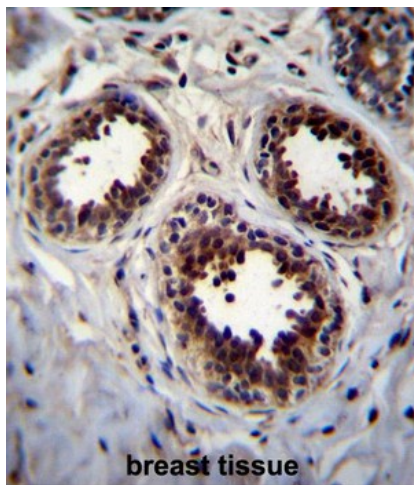
PHAS-I, PHAS-1, PHAS1

Protein Pathways:

Acute myeloid leukemia, ErbB signaling pathway, Insulin signaling pathway, mTOR signaling pathway

Product images:


Western blot analysis of EIF4EBP1 (arrow) using rabbit polyclonal EIF4EBP1 Antibody (Center) (Cat. #AP51402PU-N). 293 cell lysates (2 ug/lane) either nontransfected (Lane 1) or transiently transfected (Lane 2) with the EIF4EBP1 gene.



EIF4EBP1 Antibody (Center) (Cat. #AP51402PU-N) immunohistochemistry analysis in formalin fixed and paraffin embedded human breast tissue followed by peroxidase conjugation of the secondary antibody and DAB staining. This data demonstrates the use of EIF4EBP1 Antibody (Center) for immunohistochemistry. Clinical relevance has not been evaluated.