

Product datasheet for **AP51399PU-N**

EIF4A2 (C-term) Rabbit Polyclonal Antibody

Product data:

Product Type:	Primary Antibodies
Applications:	FC, IHC, WB
Recommended Dilution:	ELISA: 1/1000. Western Blot: 1/100 - 1/500. Immunohistochemistry on paraffin sections: 1/50 - 1/100. Flow Cytometry: 1/10 - 1/50.
Reactivity:	Human
Host:	Rabbit
Isotype:	Ig
Clonality:	Polyclonal
Immunogen:	KLH conjugated synthetic peptide between 339~369 amino acids from the C-terminal region of human EIF4A2
Specificity:	This antibody reacts to EIF3A2.
Formulation:	PBS State: Aff - Purified State: Liquid purified Ig fraction Preservative: 0.09% (W/V) sodium azide
Concentration:	lot specific
Purification:	Affinity chromatography on Protein A
Conjugation:	Unconjugated
Storage:	Store the antibody undiluted at 2-8°C for one month or (in aliquots) at -20°C for longer. Avoid repeated freezing and thawing.
Stability:	Shelf life: one year from despatch.
Predicted Protein Size:	46402 Da
Gene Name:	eukaryotic translation initiation factor 4A2
Database Link:	Entrez Gene 1974 Human Q14240



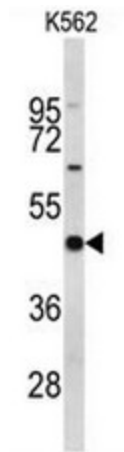
[View online »](#)

Background:

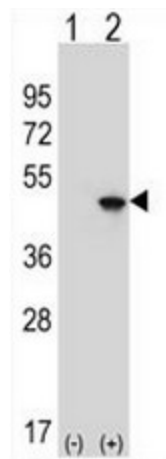
Eukaryotic initiation factor 4A plays an important role in the binding of mRNA to the 43S preinitiation complex when protein synthesis begins. Two highly homologous forms of functional EIF4A genes, Eif4a1 and Eif4a2, have been isolated in mice; yeast cells also possess 2 EIF4A genes, TIF1 and TIF2. The murine Eif4a and yeast TIF genes appear to belong to a DEAD-box gene family, whose members exhibit extensive amino acid similarity and contain the asp-glu-ala-asp (DEAD) sequence. DEAD-box genes have been identified in species ranging from E-coli to humans. Their function appears to be related to transcriptional/translational regulation (referenced from OMIM).

Synonyms:

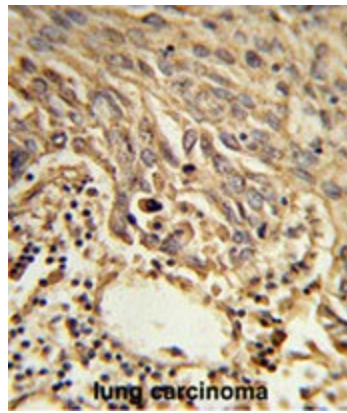
DDX2B, EIF4F, Eukaryotic initiation factor 4A-II, eIF-4A-II, eIF4A-II, BM-010

Product images:


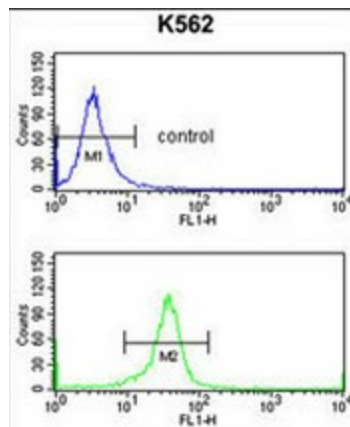
Western blot analysis of EIF4A2 Antibody (C-term) in K562 cell line lysates (35ug/lane). EIF4A2 (arrow) was detected using the purified Pab.



Western blot analysis of EIF4A2 (arrow) using rabbit polyclonal EIF4A2 Antibody (C-term). 293 cell lysates (2 ug/lane) either nontransfected (Lane 1) or transiently transfected (Lane 2) with the EIF4A2 gene.



Formalin-fixed and paraffin-embedded human lung carcinoma reacted with EIF4A2 Antibody (C-term), which was peroxidase-conjugated to the secondary antibody, followed by DAB staining. This data demonstrates the use of this antibody for immunohistochemistry; clinical relevance has not been evaluated.



EIF4A2 Antibody (C-term) flow cytometry analysis of K562 cells (bottom histogram) compared to a negative control cell (top histogram). FITC-conjugated goat-anti-rabbit secondary antibodies were used for the analysis.