

Product datasheet for **AP51392PU-N**

EIF2B4 (Center) Rabbit Polyclonal Antibody

Product data:

Product Type:	Primary Antibodies
Applications:	IHC, WB
Recommended Dilution:	ELISA: 1/1000. Western Blot: 1/100 - 1/500. Immunohistochemistry on paraffin sections: 1/50 - 1/100.
Reactivity:	Human, Mouse
Host:	Rabbit
Isotype:	Ig
Clonality:	Polyclonal
Immunogen:	KLH conjugated synthetic peptide between 153-183 amino acids from the Central region of human EIF2B4
Specificity:	This antibody reacts to EIF2B4.
Formulation:	PBS State: Aff - Purified State: Liquid purified Ig fraction Preservative: 0.09% (W/V) sodium azide
Concentration:	lot specific
Purification:	Affinity chromatography on Protein A
Conjugation:	Unconjugated
Storage:	Store the antibody undiluted at 2-8°C for one month or (in aliquots) at -20°C for longer. Avoid repeated freezing and thawing.
Stability:	Shelf life: one year from despatch.
Predicted Protein Size:	57557 Da
Gene Name:	eukaryotic translation initiation factor 2B subunit delta
Database Link:	Entrez Gene 13667 Mouse Entrez Gene 8890 Human Q9UI10



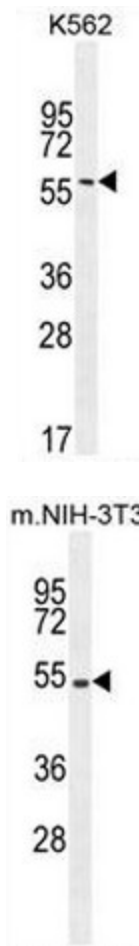
[View online »](#)

Background:

Eukaryotic initiation factor 2B (EIF2B), which is necessary for protein synthesis, is a GTP exchange factor composed of five different subunits. The protein encoded by this gene is the fourth, or delta, subunit. Defects in this gene are a cause of leukoencephalopathy with vanishing white matter (VWM) and ovarioleukodystrophy. Multiple transcript variants encoding different isoforms have been found for this gene. [provided by RefSeq].

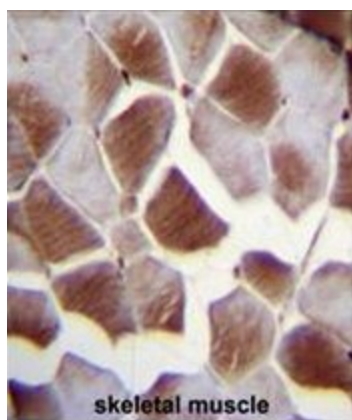
Synonyms:

Translation initiation factor eIF-2B subunit delta

Product images:


EIF2B4 Antibody (Center K161) western blot analysis in K562 cell line lysates (35ug/lane). This demonstrates the EIF2B4 antibody detected the EIF2B4 protein (arrow).

EIF2B4 Antibody (Center K161) western blot analysis in mouse NIH-3T3 cell line lysates (35uug/lane). This demonstrates the EIF2B4 antibody detected the EIF2B4 protein (arrow).



EIF2B4 Antibody (Center K161) immunohistochemistry analysis in formalin fixed and paraffin embedded human skeletal muscle followed by peroxidase conjugation of the secondary antibody and DAB staining. This data demonstrates the use of EIF2B4 Antibody (Center K161) for immunohistochemistry. Clinical relevance has not been evaluated.