

Product datasheet for **AP51391PU-N**

EIF2B1 (Center) Rabbit Polyclonal Antibody

Product data:

Product Type:	Primary Antibodies
Applications:	IHC, WB
Recommended Dilution:	ELISA: 1/1000. Western Blot: 1/100 - 1/500. Immunohistochemistry on paraffin sections: 1/10 - 1/50.
Reactivity:	Human
Host:	Rabbit
Isotype:	Ig
Clonality:	Polyclonal
Immunogen:	KLH conjugated synthetic peptide between 135-163 amino acids from the Central region of human EIF2B1
Specificity:	This antibody reacts to EIF2B1.
Formulation:	PBS State: Aff - Purified State: Liquid purified Ig fraction Preservative: 0.09% (W/V) sodium azide
Concentration:	lot specific
Purification:	Affinity chromatography on Protein A
Conjugation:	Unconjugated
Storage:	Store the antibody undiluted at 2-8°C for one month or (in aliquots) at -20°C for longer. Avoid repeated freezing and thawing.
Stability:	Shelf life: one year from despatch.
Predicted Protein Size:	33712 Da
Gene Name:	eukaryotic translation initiation factor 2B subunit alpha
Database Link:	Entrez Gene 1967 Human Q14232



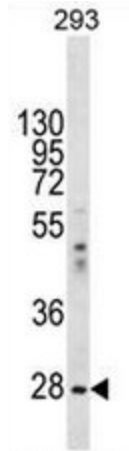
[View online »](#)

Background:

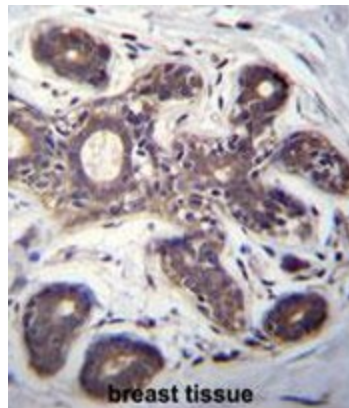
This gene encodes one of five subunits of eukaryotic translation initiation factor 2B (EIF2B), a GTP exchange factor for eukaryotic initiation factor 2 and an essential regulator for protein synthesis. Mutations in this gene and the genes encoding other EIF2B subunits have been associated with leukoencephalopathy with vanishing white matter.

Synonyms:

Translation initiation factor eIF-2B subunit alpha

Product images:


EIF2B1 Antibody (Center) western blot analysis in 293 cell line lysates (35ug/lane). This demonstrates the EIF2B1 antibody detected the EIF2B1 protein (arrow).



EIF2B1 Antibody (Center) immunohistochemistry analysis in formalin fixed and paraffin embedded human breast tissue followed by peroxidase conjugation of the secondary antibody and DAB staining. This data demonstrates the use of EIF2B1 Antibody (Center) for immunohistochemistry. Clinical relevance has not been evaluated.