

## Product datasheet for **AP51389PU-N**

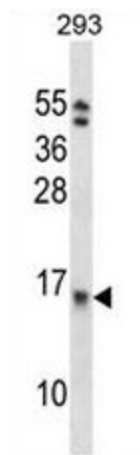
### EIF1B (C-term) Rabbit Polyclonal Antibody

#### Product data:

Product Type:	Primary Antibodies
Applications:	WB
Recommended Dilution:	<b>ELISA:</b> 1/1000. <b>Western Blot:</b> 1/100 - 1/500.
Reactivity:	Human
Host:	Rabbit
Isotype:	Ig
Clonality:	Polyclonal
Immunogen:	KLH conjugated synthetic peptide between 83-113 amino acids from the C-terminal region of human EIF1B
Specificity:	This antibody reacts to EIF1B.
Formulation:	PBS State: Aff - Purified State: Liquid purified Ig fraction Preservative: 0.09% (W/V) sodium azide
Concentration:	lot specific
Purification:	Affinity chromatography on Protein A
Conjugation:	Unconjugated
Storage:	Store the antibody undiluted at 2-8°C for one month or (in aliquots) at -20°C for longer. Avoid repeated freezing and thawing.
Stability:	Shelf life: one year from despatch.
Predicted Protein Size:	12824 Da
Gene Name:	eukaryotic translation initiation factor 1B
Database Link:	<a href="#">Entrez Gene 10289 Human O60739</a>
Background:	EIF1B is probably involved in translation.
Synonyms:	GC20



[View online »](#)

**Product images:**

EIF1B Antibody (C-term) western blot analysis in 293 cell line lysates (35ug/lane). This demonstrates the EIF1B antibody detected the EIF1B protein (arrow).