

## Product datasheet for **AP51383PU-N**

### **EFTUD2 (Center) Rabbit Polyclonal Antibody**

#### **Product data:**

Product Type:	Primary Antibodies
Applications:	IHC, WB
Recommended Dilution:	<b>ELISA:</b> 1/1000. <b>Western Blot:</b> 1/100 - 1/500. <b>Immunohistochemistry on paraffin sections:</b> 1/50 - 1/100.
Reactivity:	Human
Host:	Rabbit
Isotype:	Ig
Clonality:	Polyclonal
Immunogen:	KLH conjugated synthetic peptide between 263~293 amino acids from the Center region of human EFTUD2
Specificity:	This antibody reacts to EFTUD2.
Formulation:	PBS State: Aff - Purified State: Liquid purified Ig fraction Preservative: 0.09% (W/V) sodium azide
Concentration:	lot specific
Purification:	Affinity chromatography on Protein A
Conjugation:	Unconjugated
Storage:	Store the antibody undiluted at 2-8°C for one month or (in aliquots) at -20°C for longer. Avoid repeated freezing and thawing.
Stability:	Shelf life: one year from despatch.
Predicted Protein Size:	109436 Da
Gene Name:	elongation factor Tu GTP binding domain containing 2
Database Link:	<a href="#">Entrez Gene 9343 Human Q15029</a>
Background:	EFTUD2 is component of the U5 snRNP complex required for pre-mRNA splicing.

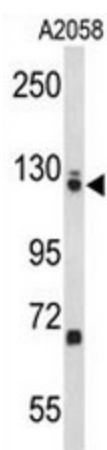


[View online »](#)

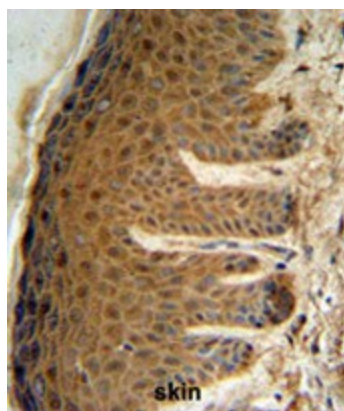
Synonyms: SNRP116, KIAA0031

Protein Pathways: Spliceosome

### Product images:



Western blot analysis of EFTUD2 Antibody (Center) in A2058 cell line lysates (35ug/lane). EFTUD2 (arrow) was detected using the purified Pab.



EFTUD2 Antibody (Center) IHC analysis in formalin fixed and paraffin embedded human skin tissue followed by peroxidase conjugation of the secondary antibody and DAB staining. This data demonstrates the use of the EFTUD2 Antibody (Center) for immunohistochemistry. Clinical relevance has not been evaluated.