

## Product datasheet for **AP51377PU-N**

### EFHC2 (N-term) Rabbit Polyclonal Antibody

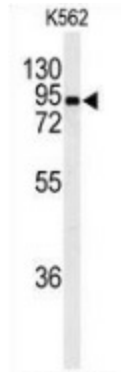
#### Product data:

Product Type:	Primary Antibodies
Applications:	FC, WB
Recommended Dilution:	<b>Flow cytometry:</b> 1/10-1/50. <b>Western blot:</b> 1/100-1/500. Enzyme immunoassay: 1/1000.
Reactivity:	Human
Host:	Rabbit
Isotype:	Ig
Clonality:	Polyclonal
Immunogen:	Synthetic peptide - KLH conjugated - corresponding to the N-terminal region (between 100-130aa) of human EFHC2.
Specificity:	This antibody recognizes EFHC2 at N-term.
Formulation:	PBS with 0.09% (W/V) Sodium azide State: Aff - Purified State: Liquid purified Ig fraction
Concentration:	lot specific
Purification:	Purified through a Protein A column followed by peptide affinity purification
Conjugation:	Unconjugated
Storage:	Store undiluted at 2-8°C for one month or (in aliquots) at -20°C for longer. Avoid repeated freezing and thawing.
Stability:	Shelf life: one year from despatch.
Gene Name:	EF-hand domain containing 2
Database Link:	<a href="#">Entrez Gene 80258 Human Q5JST6</a>
Synonyms:	dj1158H2.1; DKFZp686G08235; FLJ22601; FLJ22843
Note:	<b>Molecular Weight:</b> 87397 Da

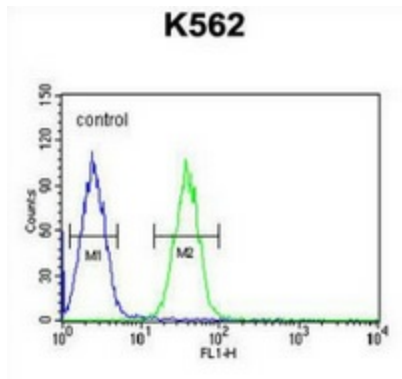


[View online »](#)

Product images:



Western blot analysis of EFHC2 (arrow) in K562 cell line lysates (35ug/lane) using EFHC2 antibody. (N-term).



Flow cytometric analysis of K562 cells (right histogram) compared to a negative control cell (left histogram) using EFHC2 antibody. (N-term), followed by FITC-conjugated goat-anti-rabbit secondary antibodies.