

Product datasheet for **AP51376PU-N**

EFHB (N-term) Rabbit Polyclonal Antibody

Product data:

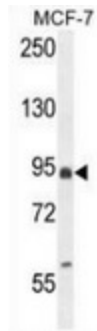
Product Type:	Primary Antibodies
Applications:	FC, IHC, WB
Recommended Dilution:	Flow cytometry: 1/10-1/50. Immunohistochemistry on Paraffin sections: 1/50-1/100. Western blot: 1/100-1/500. Enzyme immunoassay: 1/1000.
Reactivity:	Human
Host:	Rabbit
Isotype:	Ig
Clonality:	Polyclonal
Immunogen:	Synthetic peptide - KLH conjugated - corresponding to the N-terminal region (between 1-30aa) of human EFHB.
Specificity:	This antibody recognizes human EFHB at N-term.
Formulation:	PBS with 0.09% (W/V) Sodium azide State: Aff - Purified State: Liquid purified Ig fraction
Concentration:	lot specific
Purification:	Purified through a Protein A column followed by peptide affinity purification
Conjugation:	Unconjugated
Storage:	Store undiluted at 2-8°C for one month or (in aliquots) at -20°C for longer. Avoid repeated freezing and thawing.
Stability:	Shelf life: one year from despatch.
Gene Name:	EF-hand domain family member B
Database Link:	Entrez Gene 151651 Human Q8N7U6
Background:	EFHB contains two EF-hand domains. There are three named isoforms.
Synonyms:	FLJ25200



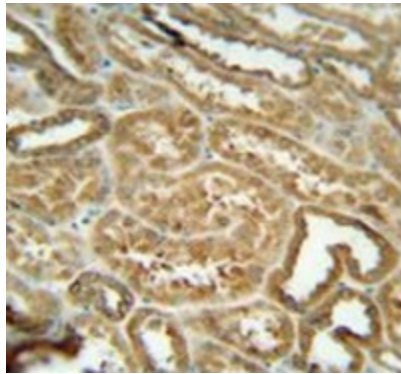
[View online »](#)

Note: **Molecular Weight:** 93802 Da

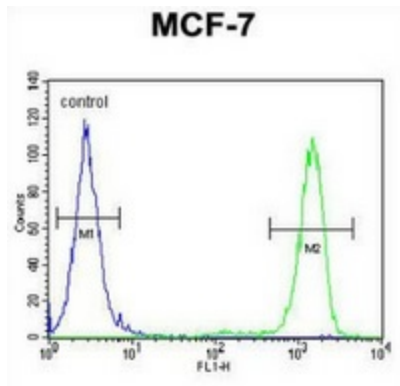
Product images:



Western blot analysis in MCF-7 cell line lysates (35ug/lane) using EFHB antibody. (N-term). This demonstrates this antibody detected the EFHB protein (arrow).



Immunohistochemistry analysis in human kidney tissue (Formalin-fixed, Paraffin-embedded) using EFHB antibody. (N-term), followed by peroxidase conjugation of the secondary antibody and DAB staining. This data demonstrates the use of this antibody for IHC. Clinical relevance has not been evaluated.



Flow cytometric analysis of MCF-7 cells (right histogram) compared to a negative control cell (left histogram) using EFHB antibody. (N-term), followed by FITC-conjugated goat-anti-rabbit secondary antibodies.