

## Product datasheet for **AP51375PU-N**

### EFEMP2 (C-term) Rabbit Polyclonal Antibody

#### Product data:

Product Type:	Primary Antibodies
Applications:	FC, WB
Recommended Dilution:	<b>Flow cytometry:</b> 1/10-1/50. <b>Western blot:</b> 1/100-1/500. Enzyme immunoassay: 1/1000.
Reactivity:	Human, Mouse
Host:	Rabbit
Isotype:	Ig
Clonality:	Polyclonal
Immunogen:	Synthetic peptide - KLH conjugated - corresponding to the C-terminal region (between 393-422aa) of human Fibulin-4
Specificity:	This antibody recognizes Fibulin-4 at C-term.
Formulation:	PBS with 0.09% (W/V) Sodium azide State: Aff - Purified State: Liquid purified Ig fraction
Concentration:	lot specific
Purification:	Purified through a Protein A column followed by peptide affinity purification
Conjugation:	Unconjugated
Storage:	Store undiluted at 2-8°C for one month or (in aliquots) at -20°C for longer. Avoid repeated freezing and thawing.
Stability:	Shelf life: one year from despatch.
Gene Name:	EGF containing fibulin like extracellular matrix protein 2
Database Link:	<a href="#">Entrez Gene 58859 Mouse</a> <a href="#">Entrez Gene 30008 Human</a> <a href="#">O95967</a>



[View online »](#)

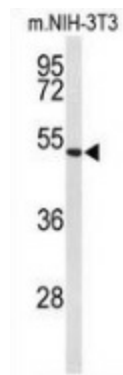
**Background:** EFEMP2 / Fibulin-4 has been found to contain variations of the epidermal growth factor (EGF) domain and have been implicated in functions as diverse as blood coagulation, activation of complement and determination of cell fate during development. The protein contains four EGF2 domains and six calcium-binding EGF2 domains. This protein is necessary for elastic fiber formation and connective tissue development.

**Synonyms:** Fibulin 4, EFEMP2, FBLN4, UNQ200/PRO226, Protein UPH1

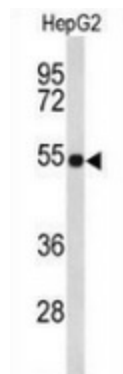
**Note:** **Molecular Weight:** 49405 Da

**Protein Families:** Druggable Genome, Secreted Protein

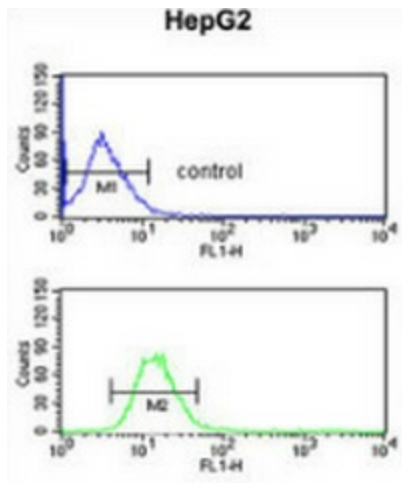
### Product images:



Western blot analysis of Fibulin-4 (arrow) in mouse NIH-3T3 cell line lysates (35ug/lane) using Fibulin-4 antibody. (C-term).



Western blot analysis of Fibulin-4 (arrow) in HepG2 cell line lysates (35ug/lane) using Fibulin-4 antibody. (C-term).



Flow cytometric analysis of HepG2 cells (bottom histogram) compared to a negative control cell (top histogram) using Fibulin-4 antibody. (C-term), followed by FITC-conjugated goat-anti-rabbit secondary antibodies.