

## Product datasheet for **AP51374PU-N**

### **EFEMP1 (N-term) Rabbit Polyclonal Antibody**

#### **Product data:**

Product Type:	Primary Antibodies
Applications:	FC, IHC, WB
Recommended Dilution:	<b>Flow cytometry:</b> 1/10-1/50. <b>Immunohistochemistry on Paraffin sections:</b> 1/50-1/100. <b>Western blot:</b> 1/100-1/500. Enzyme immunoassay: 1/1000.
Reactivity:	Human, Mouse
Host:	Rabbit
Isotype:	Ig
Clonality:	Polyclonal
Immunogen:	Synthetic peptide - KLH conjugated - corresponding to the N-terminal region (between 126-156aa) of human Fibulin-3
Specificity:	This antibody recognizes Fibulin-3 at N-term.
Formulation:	PBS with 0.09% (W/V) Sodium azide State: Aff - Purified State: Liquid purified Ig fraction
Concentration:	lot specific
Purification:	Purified through a Protein A column followed by peptide affinity purification
Conjugation:	Unconjugated
Storage:	Store undiluted at 2-8°C for one month or (in aliquots) at -20°C for longer. Avoid repeated freezing and thawing.
Stability:	Shelf life: one year from despatch.
Gene Name:	EGF containing fibulin like extracellular matrix protein 1
Database Link:	<a href="#">Entrez Gene 216616 Mouse</a> <a href="#">Entrez Gene 2202 Human</a> <a href="#">Q12805</a>



[View online »](#)

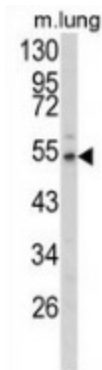
**Background:** EFEMP1 encodes a member of the fibulin family of extracellular matrix glycoproteins. Like all members of this family, Fibulin-3 contains tandemly repeated epidermal growth factor-like repeats followed by a C-terminus fibulin-type domain. This gene is upregulated in malignant gliomas and may play a role in the aggressive nature of these tumors.

**Synonyms:** DHRD, DRAD, FBNL, MLVT, MTLV, S1-5, Fibulin 3, EFEMP1, FBLN3

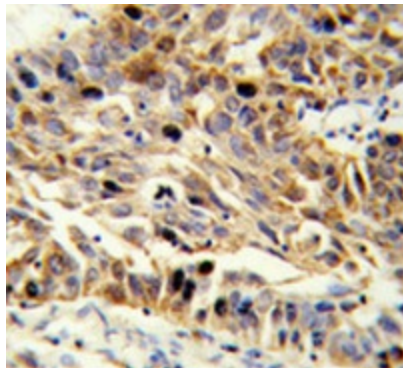
**Note:** **Molecular Weight:** 54641 Da

**Protein Families:** Secreted Protein

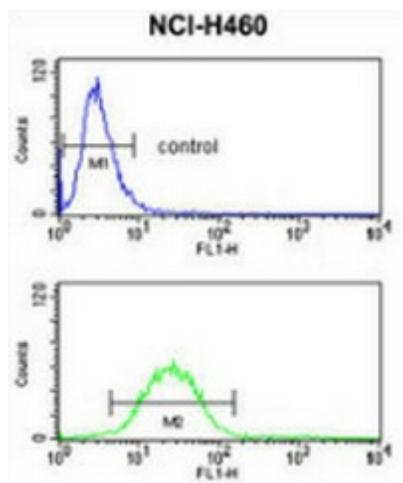
### Product images:



Western blot analysis of Fibulin-3 (arrow) in mouse lung tissue lysates (35ug/lane) using Fibulin-3 antibody. (N-term).



Immunohistochemistry analysis in human lung carcinoma (Formalin-fixed, Paraffin-embedded) using Fibulin-3 antibody. (N-term), followed by peroxidase-conjugated secondary antibody and DAB staining. This data demonstrates the use of this antibody for IHC. Clinical relevance has not been evaluated.



Flow cytometry analysis of NCI-H460 cells (bottom histogram) compared to a negative control cell (top histogram) using Fibulin-3 antibody. (N-term), followed by FITC-conjugated goat-anti-rabbit secondary antibodies.