

Product datasheet for **AP51370PU-N**

EEFSEC (C-term) Rabbit Polyclonal Antibody

Product data:

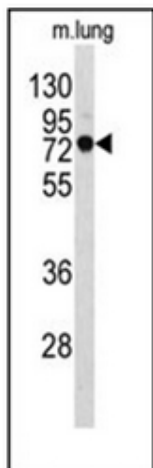
Product Type:	Primary Antibodies
Applications:	IHC, WB
Recommended Dilution:	ELISA: 1/1000. Western Blot: 1/100-1/500. Immunohistochemistry on Paraffin Sections: 1/50-1/100.
Reactivity:	Human, Mouse
Host:	Rabbit
Isotype:	Ig
Clonality:	Polyclonal
Immunogen:	KLH conjugated synthetic peptide between 547~577 amino acids from the C-terminal region of Human EEFSEC
Specificity:	This antibody recognizes Human and Mouse EEFSEC / SELB (C-term).
Formulation:	PBS containing 0.09% (W/V) Sodium Azide as preservative State: Purified State: Liquid purified Ig fraction
Concentration:	lot specific
Purification:	Affinity Chromatography on Protein A
Conjugation:	Unconjugated
Storage:	Store undiluted at 2-8°C for one month or (in aliquots) at -20°C for longer. Avoid repeated freezing and thawing.
Stability:	Shelf life: one year from despatch.
Gene Name:	eukaryotic elongation factor, selenocysteine-tRNA specific
Database Link:	Entrez Gene 60678 Human P57772
Background:	EEFSEC is a translation factor necessary for the incorporation of selenocysteine into proteins. It probably replaces EF-Tu for the insertion of selenocysteine directed by the UGA codon. SelB binds GTP and GDP.
Synonyms:	EFSEC; SELB



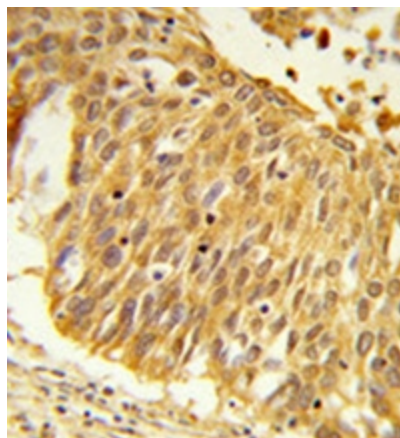
[View online »](#)

Note: **Molecular Weight:** 65305 Da

Product images:



Western blot analysis of EEFSEC / SELB Antibody (C-term) in mouse lung tissue lysates (35ug/lane). EEFSEC (arrow) was detected using the purified Pab.



Formalin-fixed and paraffin-embedded human lung carcinoma reacted with EEFSEC / SELB Antibody (C-term), which was peroxidase-conjugated to the secondary antibody, followed by DAB staining.