

## Product datasheet for **AP51369PU-N**

### EEF1A2 (C-term) Rabbit Polyclonal Antibody

#### Product data:

Product Type:	Primary Antibodies
Applications:	IHC, WB
Recommended Dilution:	<b>ELISA:</b> 1/1000. <b>Western Blot:</b> 1/100-1/500. <b>Immunohistochemistry on Paraffin Sections:</b> 1/10-1/50.
Reactivity:	Human, Mouse
Host:	Rabbit
Isotype:	Ig
Clonality:	Polyclonal
Immunogen:	KLH conjugated synthetic peptide between 365-395 amino acids from the C-terminal region of Human EEF1A2
Specificity:	This antibody recognizes Human and Mouse EEF1A2 (C-term).
Formulation:	PBS containing 0.09% (W/V) Sodium Azide as preservative State: Aff - Purified State: Liquid purified Ig fraction
Concentration:	lot specific
Purification:	Affinity Chromatography on Protein A
Conjugation:	Unconjugated
Storage:	Store undiluted at 2-8°C for one month or (in aliquots) at -20°C for longer. Avoid repeated freezing and thawing.
Stability:	Shelf life: one year from despatch.
Gene Name:	eukaryotic translation elongation factor 1 alpha 2
Database Link:	<a href="#">Entrez Gene 13628 Mouse</a> <a href="#">Entrez Gene 1917 Human</a> <a href="#">Q05639</a>



[View online »](#)

**Background:**

This gene encodes an isoform of the alpha subunit of the elongation factor-1 complex, which is responsible for the enzymatic delivery of aminoacyl tRNAs to the ribosome. This isoform (alpha 2) is expressed in brain, heart and skeletal muscle, and the other isoform (alpha 1) is expressed in brain, placenta, lung, liver, kidney, and pancreas. This gene may be critical in the development of ovarian cancer. Alternatively spliced transcript variants encoding different isoforms have been found for this gene.

**Synonyms:**

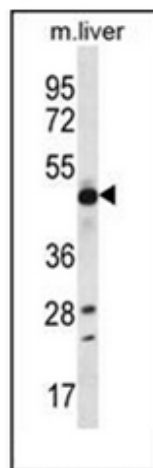
EF-1-alpha-2, eEF1A-2, Statin S1, EEF1AL, STN, HS1,EF1A, STNL, FLJ41696, Elongation factor 1-alpha 2

**Note:**

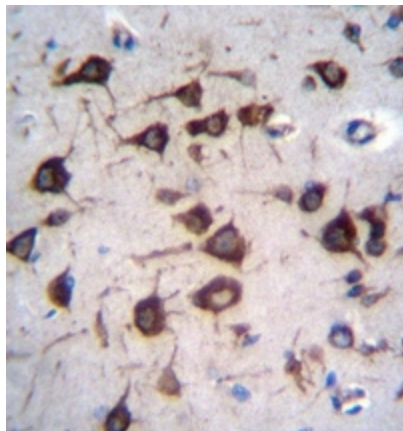
**Molecular Weight:** 50470 Da

**Protein Families:**

Druggable Genome

**Product images:**

Western blot analysis of EEF1A2 Antibody (C-term) in mouse liver tissue lysates (35ug/lane). This demonstrates the EEF1A2 antibody detected the EEF1A2 protein (arrow).



Formalin fixed and paraffin embedded human brain tissue reacted with EEF1A2 Antibody (C-term) followed by peroxidase conjugation of the secondary antibody and DAB staining.