

## Product datasheet for **AP51366PU-N**

### Endothelin-3 (C-term) Rabbit Polyclonal Antibody

#### Product data:

Product Type:	Primary Antibodies
Applications:	WB
Recommended Dilution:	<b>ELISA:</b> 1/1000. <b>Western Blot:</b> 1/100-1/500.
Reactivity:	Human
Host:	Rabbit
Isotype:	Ig
Clonality:	Polyclonal
Immunogen:	conjugated synthetic peptide between 175-205 amino acids from the C-terminal region of Human Endothelin-3.
Specificity:	This antibody recognizes Human Endothelin-3 (C-term).
Formulation:	PBS containing 0.09% (W/V) Sodium Azide as preservative State: Aff - Purified State: Liquid purified Ig fraction
Concentration:	lot specific
Purification:	Affinity Chromatography on Protein A
Conjugation:	Unconjugated
Storage:	Store undiluted at 2-8°C for one month or (in aliquots) at -20°C to -80°C for longer. Avoid repeated freezing and thawing.
Stability:	Shelf life: one year from despatch.
Gene Name:	endothelin 3
Database Link:	<a href="#">Entrez Gene 1908 Human P14138</a>



[View online »](#)

**Background:**

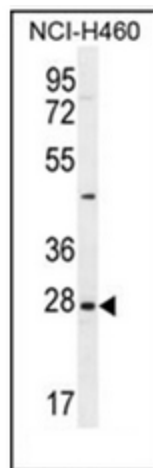
The protein encoded by this gene is a member of the endothelin family. Endothelins are endothelium-derived vasoactive peptides involved in a variety of biological functions. The active form of this protein is a 21 amino acid peptide processed from the precursor protein. The active peptide is a ligand for endothelin receptor type B (EDNRB). The interaction of this endothelin with EDNRB is essential for development of neural crest-derived cell lineages, such as melanocytes and enteric neurons. Mutations in this gene and EDNRB have been associated with Hirschsprung disease (HSCR) and Waardenburg syndrome (WS), which are congenital disorders involving neural crest-derived cells. Four alternatively spliced transcript variants encoding three distinct isoforms have been observed.

**Synonyms:**

ET-3, PPET3, ET3, WS4B, HSCR4, MGC15067, MGC61498, EDN3

**Note:**

**Molecular Weight:** 25454 Da

**Product images:**

Western blot analysis of Endothelin-3 Antibody (C-term) Cat.-NoAP51366PU-N in NCI-H460 cell line lysates (35ug/lane). This demonstrates the EDN3 antibody detected the EDN3 protein (arrow).