

## Product datasheet for **AP51365PU-N**

### Endothelin 1 (EDN1) (C-term) Rabbit Polyclonal Antibody

#### Product data:

Product Type:	Primary Antibodies
Applications:	IF, IHC, WB
Recommended Dilution:	<b>ELISA:</b> 1/1000. <b>Western Blot:</b> 1/100-1/500. <b>Immunofluorescence:</b> 1/10-1/50. <b>Immunohistochemistry on Paraffin Sections:</b> 1/50-1/100.
Reactivity:	Human
Host:	Rabbit
Isotype:	Ig
Clonality:	Polyclonal
Immunogen:	KLH conjugated synthetic peptide between 183-211 amino acids from the C-terminal region of Human EDN1
Specificity:	This antibody recognizes Human Endothelin-1 (C-term). Other species not tested.
Formulation:	PBS containing 0.09% (W/V) Sodium Azide as preservative State: Aff - Purified State: Liquid purified Ig fraction
Concentration:	lot specific
Purification:	Affinity Chromatography on Protein A
Conjugation:	Unconjugated
Storage:	Store undiluted at 2-8°C for one month or (in aliquots) at -20°C for longer. Avoid repeated freezing and thawing.
Stability:	Shelf life: one year from despatch.
Gene Name:	endothelin 1
Database Link:	<a href="#">Entrez Gene 1906 Human P05305</a>



[View online »](#)

**Background:** The protein encoded by this gene is proteolytically processed to release a secreted peptide termed endothelin 1. This peptide is a potent vasoconstrictor and is produced by vascular endothelial cells. Endothelin 1 also can affect the central nervous system. Two transcript variants encoding different isoforms have been found for this gene.

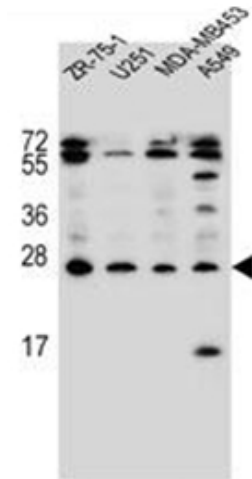
**Synonyms:** PPET1, EDN1, ET1, HDLCQ7, EDN1

**Note:** **Molecular Weight:** 24425 Da

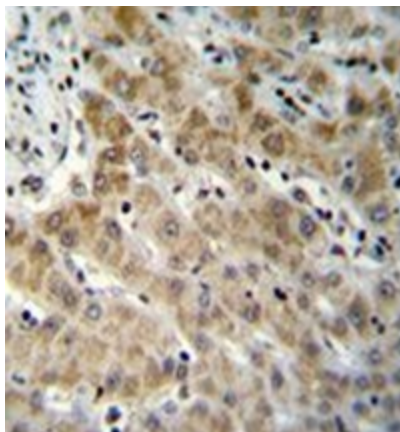
**Protein Families:** Druggable Genome, Secreted Protein

**Protein Pathways:** Melanogenesis

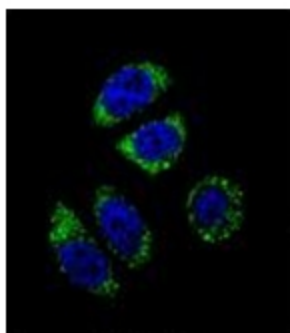
**Product images:**



Western blot analysis of Endothelin-1 Antibody (C-term) in ZR-75-1, U251, MDA-MB453, A549 cell line lysates (35ug/lane). This demonstrates the EDN1 antibody detected the EDN1 protein (arrow).



Formalin fixed and paraffin embedded human liver tissue reacted with Endothelin-1 Antibody (C-term) followed by peroxidase conjugation of the secondary antibody and DAB staining.



Confocal immunofluorescent analysis of Endothelin-1 Antibody (C-term) with A549 cell followed by Alexa Fluor 488-conjugated goat anti-rabbit IgG (green). DAPI was used to stain the cell nuclear (blue).