

Product datasheet for **AP51364PU-N**

Endothelin 1 (EDN1) (Center) Rabbit Polyclonal Antibody

Product data:

Product Type:	Primary Antibodies
Applications:	FC, IF, IHC, WB
Recommended Dilution:	ELISA: 1/1000. Western Blot: 1/1000. Flow Cytometry: 1/10-1/50. Immunofluorescence: 1/10-1/50. Immunohistochemistry on Paraffin Sections: 1/50-1/100.
Reactivity:	Human
Host:	Rabbit
Isotype:	Ig
Clonality:	Polyclonal
Immunogen:	KLH conjugated synthetic peptide between 111-138 amino acids from the Central region of human EDN1
Specificity:	This antibody recognizes Human Endothelin-1 (Center).
Formulation:	PBS containing 0.09% (W/V) Sodium Azide as preservative State: Aff - Purified State: Liquid purified Ig fraction
Concentration:	lot specific
Purification:	Affinity Chromatography on Protein A
Conjugation:	Unconjugated
Storage:	Store undiluted at 2-8°C for one month or (in aliquots) at -20°C for longer. Avoid repeated freezing and thawing.
Stability:	Shelf life: one year from despatch.
Gene Name:	endothelin 1
Database Link:	Entrez Gene 1906 Human P05305



[View online »](#)

Background: The protein encoded by this gene is proteolytically processed to release a secreted peptide termed endothelin 1. This peptide is a potent vasoconstrictor and is produced by vascular endothelial cells. Endothelin 1 also can affect the central nervous system. Two transcript variants encoding different isoforms have been found for this gene.

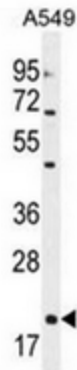
Synonyms: PPET1, EDN1, ET1, HDLCQ7, EDN1

Note: **Molecular Weight:** 24425 Da

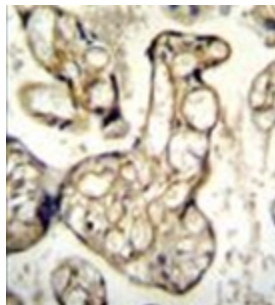
Protein Families: Druggable Genome, Secreted Protein

Protein Pathways: Melanogenesis

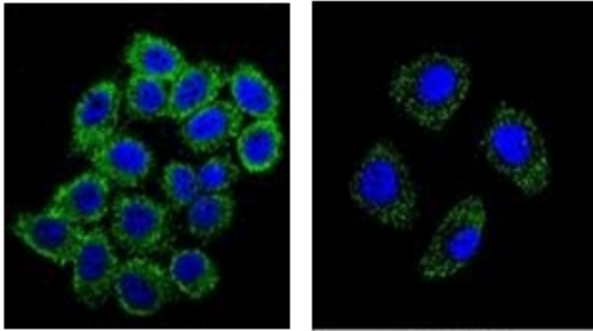
Product images:



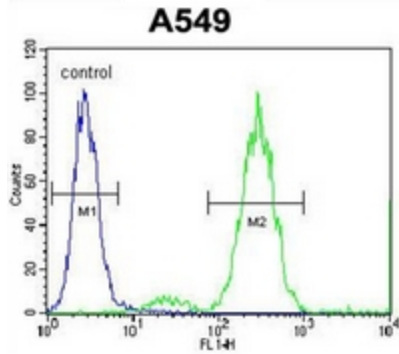
Western blot analysis of Endothelin-1 Antibody in A549 cell line lysates (35ug/lane).



Formalin fixed and paraffin embedded human placenta tissue reacted with Endothelin-1 Antibody followed by peroxidase conjugation of the secondary antibody and DAB staining.



Confocal immunofluorescent analysis of Endothelin-1 Antibody with A549 cell and followed by Alexa Fluor 488-conjugated goat anti-rabbit IgG (green). DAPI was used to stain the cell nuclear (blue).



Flow cytometric analysis of A549 cells using Endothelin-1 Antibody (right histogram) compared to a negative control cell (left histogram). FITC-conjugated goat-anti-rabbit secondary antibodies were used for the analysis.