

Product datasheet for **AP51363PU-N**

EDEM3 (C-term) Rabbit Polyclonal Antibody

Product data:

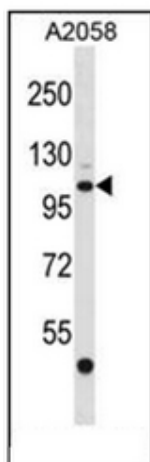
Product Type:	Primary Antibodies
Applications:	WB
Recommended Dilution:	ELISA: 1/1000. Western Blot: 1/100-1/500.
Reactivity:	Human
Host:	Rabbit
Isotype:	Ig
Clonality:	Polyclonal
Immunogen:	KLH conjugated synthetic peptide between 773-802 amino acids from the C-terminal region of human EDEM3
Specificity:	This antibody recognizes Human EDEM3 (C-term).
Formulation:	PBS containing 0.09% (W/V) Sodium Azide as preservative State: Aff - Purified State: Liquid purified Ig fraction
Concentration:	lot specific
Purification:	Affinity Chromatography on Protein A
Conjugation:	Unconjugated
Storage:	Store undiluted at 2-8°C for one month or (in aliquots) at -20°C for longer. Avoid repeated freezing and thawing.
Stability:	Shelf life: one year from despatch.
Gene Name:	ER degradation enhancing alpha-mannosidase like protein 3
Database Link:	Entrez Gene 80267 Human Q9BZQ6
Background:	Quality control in the endoplasmic reticulum (ER) ensures that only properly folded proteins are retained in the cell through recognition and degradation of misfolded or unassembled proteins. EDEM3 belongs to a group of proteins that accelerate degradation of misfolded glycoproteins in the ER (Hirao et al., 2006 [PubMed 16431915]).
Synonyms:	C1orf22



[View online »](#)

Note: **Molecular Weight:** 104664 Da

Product images:



Western blot analysis of EDEM3 Antibody (C-term) in A2058 cell line lysates (35ug/lane). This demonstrates the EDEM3 antibody detected the EDEM3 protein (arrow).