

Product datasheet for **AP51361PU-N**

ECT2L (C-term) Rabbit Polyclonal Antibody

Product data:

Product Type:	Primary Antibodies
Applications:	IHC, WB
Recommended Dilution:	ELISA: 1/1000. Western Blot: 1/100-1/500. Immunohistochemistry on Paraffin Sections: 1/50-1/100.
Reactivity:	Human
Host:	Rabbit
Isotype:	Ig
Clonality:	Polyclonal
Immunogen:	KLH conjugated synthetic peptide between 732-761 amino acids from the C-terminal region of human ECT2L
Specificity:	This antibody recognizes Human ECT2L (C-term).
Formulation:	PBS containing 0.09% (W/V) Sodium Azide as preservative State: Aff - Purified State: Liquid purified Ig fraction
Concentration:	lot specific
Purification:	Affinity Chromatography on Protein A
Conjugation:	Unconjugated
Storage:	Store undiluted at 2-8°C for one month or (in aliquots) at -20°C for longer. Avoid repeated freezing and thawing.
Stability:	Shelf life: one year from despatch.
Gene Name:	epithelial cell transforming 2 like
Database Link:	Entrez Gene 345930 Human Q008S8

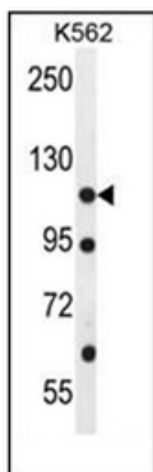


Background: ECT2L may act as a guanine nucleotide exchange factor (GEF) (By similarity).

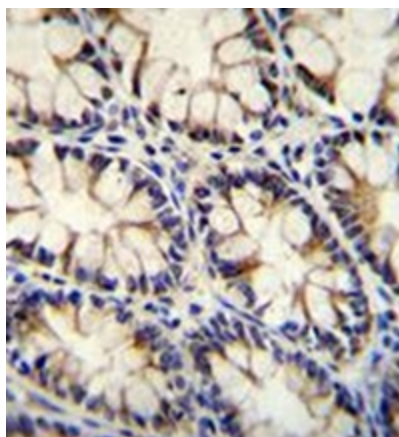
Synonyms: Epithelial cell-transforming sequence 2 oncogene-like, C6orf91, LFDH

Note: **Molecular Weight:** 104880 Da

Product images:



Western blot analysis of ECT2L Antibody (C-term) in K562 cell line lysates (35ug/lane). This demonstrates the ECT2L antibody detected the ECT2L protein (arrow).



Formalin fixed and paraffin embedded human rectum tissue reacted with ECT2L Antibody (C-term) followed by peroxidase conjugation of the secondary antibody and DAB staining.