

Product datasheet for **AP51360PU-N**

ECT2 (Center) Rabbit Polyclonal Antibody

Product data:

Product Type:	Primary Antibodies
Applications:	WB
Recommended Dilution:	ELISA: 1/1000. Western Blot: 1/100-1/500.
Reactivity:	Human
Host:	Rabbit
Isotype:	Ig
Clonality:	Polyclonal
Immunogen:	KLH conjugated synthetic peptide between 565-594 amino acids from the Central region of Human ECT2.
Specificity:	This antibody recognizes Human ECT2 (Center).
Formulation:	PBS containing 0.09% (W/V) Sodium Azide as preservative State: Aff - Purified State: Liquid purified Ig fraction
Concentration:	lot specific
Purification:	Affinity Chromatography on Protein A
Conjugation:	Unconjugated
Storage:	Store undiluted at 2-8°C for one month or (in aliquots) at -20°C for longer. Avoid repeated freezing and thawing.
Stability:	Shelf life: one year from despatch.
Gene Name:	epithelial cell transforming 2
Database Link:	Entrez Gene 1894 Human Q9H8V3



[View online »](#)

Background:

The protein encoded by this gene is a transforming protein that is related to Rho-specific exchange factors and yeast cell cycle regulators. The expression of this gene is elevated with the onset of DNA synthesis and remains elevated during G2 and M phases. In situ hybridization analysis showed that expression is at a high level in cells undergoing mitosis in regenerating liver. Thus, this protein is expressed in a cell cycle-dependent manner during liver regeneration, and is thought to have an important role in the regulation of cytokinesis.

Synonyms:

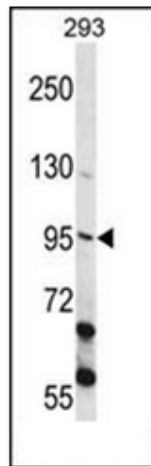
FLJ10461; MGC138291

Note:

Molecular Weight: 100051 Da

Protein Families:

Druggable Genome

Product images:

Western blot analysis of ECT2 Antibody in 293 cell line lysates (35ug/lane). This demonstrates the ECT2 antibody detected the ECT2 protein (arrow).