

## Product datasheet for **AP51357PU-N**

### **ECHDC1 (C-term) Rabbit Polyclonal Antibody**

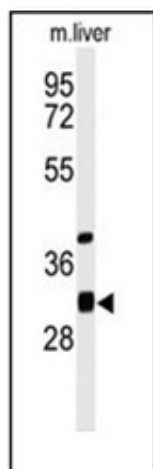
#### **Product data:**

Product Type:	Primary Antibodies
Applications:	WB
Recommended Dilution:	<b>ELISA:</b> 1/1000. <b>Western Blot:</b> 1/100-1/500.
Reactivity:	Human, Mouse
Host:	Rabbit
Isotype:	Ig
Clonality:	Polyclonal
Immunogen:	KLH conjugated synthetic peptide between 261~291 amino acids from the C-terminal region of Human ECHDC1.
Specificity:	This antibody recognizes Human and Mouse ECHDC1 (C-term).
Formulation:	PBS containing 0.09% (W/V) Sodium Azide as preservative State: Aff - Purified State: Liquid purified Ig fraction
Concentration:	lot specific
Purification:	Affinity Chromatography on Protein A
Conjugation:	Unconjugated
Storage:	Store undiluted at 2-8°C for one month or (in aliquots) at -20°C for longer. Avoid repeated freezing and thawing.
Stability:	Shelf life: one year from despatch.
Gene Name:	ethylmalonyl-CoA decarboxylase 1
Database Link:	<a href="#">Entrez Gene 52665 Mouse</a> <a href="#">Entrez Gene 55862 Human</a> <a href="#">Q9NTX5</a>
Background:	ECHDC1 belongs to the enoyl-CoA hydratase/isomerase family. There are two named isoforms.
Synonyms:	FLJ40827, dj351K20.2, DKFZp762M1110, ECHDC1
Note:	<b>Molecular Weight:</b> 33698 Da



[View online »](#)

## Product images:



Western blot analysis of ECHDC1 Antibody (C-term) in mouse liver tissue lysates (35ug/lane). ECHDC1 (arrow) was detected using the purified Pab.