

Product datasheet for **AP51356PU-N**

Ecat1 (KHDC3L) (N-term) Rabbit Polyclonal Antibody

Product data:

Product Type:	Primary Antibodies
Applications:	FC, IHC, WB
Recommended Dilution:	ELISA: 1/1000. Western Blot: 1/100-1/500. Flow Cytometry: 1/10-1/50. Immunohistochemistry on Paraffin Sections: 1/10-1/50.
Reactivity:	Human
Host:	Rabbit
Isotype:	Ig
Clonality:	Polyclonal
Immunogen:	KLH conjugated synthetic peptide between 27-56 amino acids from the N-terminal region of Human ECAT1.
Specificity:	This antibody recognizes Human ECAT1 (N-term).
Formulation:	PBS containing 0.09% (W/V) Sodium Azide as preservative State: Aff - Purified State: Liquid purified Ig fraction
Concentration:	lot specific
Purification:	Affinity Chromatography on Protein A
Conjugation:	Unconjugated
Storage:	Store undiluted at 2-8°C for one month or (in aliquots) at -20°C for longer. Avoid repeated freezing and thawing.
Stability:	Shelf life: one year from despatch.
Gene Name:	KH domain containing 3 like, subcortical maternal complex member

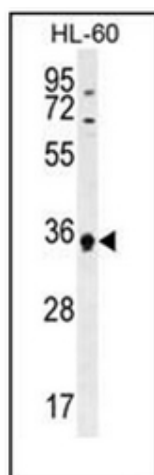


Database Link: [Entrez Gene 154288 Human](#)
[Q587J8](#)

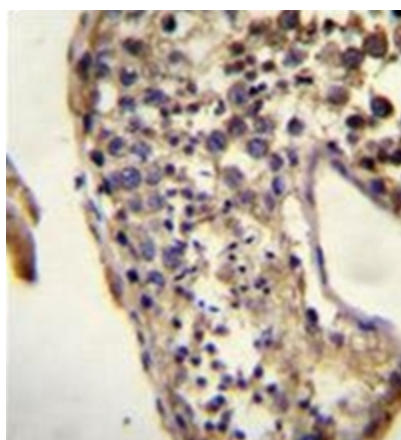
Synonyms: ES cell-associated transcript 1 protein, C6orf221

Note: **Molecular Weight:** 24306 Da

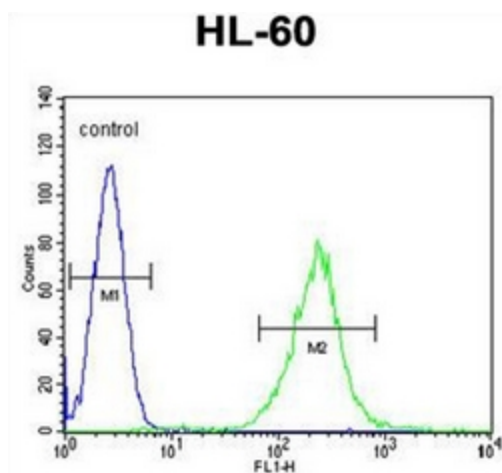
Product images:



Western blot analysis of ECAT1 Antibody (N-term) in HL-60 cell line lysates (35ug/lane). This demonstrates the ECAT1 antibody detected the ECAT1 protein (arrow).



Formalin fixed and paraffin embedded human testis tissue reacted with ECAT1 Antibody (N-term) followed by peroxidase conjugation of the secondary antibody and DAB staining.



Flow cytometric analysis of HL-60 cells using ECAT1 Antibody (N-term) (right histogram) compared to a negative control cell (left histogram). FITC-conjugated goat-anti-rabbit secondary antibodies were used for the analysis.