

Product datasheet for **AP51355PU-N**

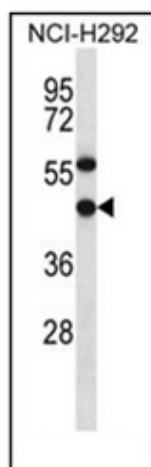
EBNA1 binding protein 2 (EBNA1BP2) (C-term) Rabbit Polyclonal Antibody

Product data:

Product Type:	Primary Antibodies
Applications:	WB
Recommended Dilution:	ELISA: 1/1000. Western Blot: 1/100-1/500.
Reactivity:	Human
Host:	Rabbit
Isotype:	Ig
Clonality:	Polyclonal
Immunogen:	conjugated synthetic peptide between 323-355 amino acids from the C-terminal region of Human EBNA1BP2.
Specificity:	This antibody recognizes Human EBNA1BP2 (C-term).
Formulation:	PBS containing 0.09% (W/V) Sodium Azide as preservative State: Aff - Purified State: Liquid purified Ig fraction
Concentration:	lot specific
Purification:	Affinity Chromatography on Protein A
Conjugation:	Unconjugated
Storage:	Store undiluted at 2-8°C for one month or (in aliquots) at -20°C for longer. Avoid repeated freezing and thawing.
Stability:	Shelf life: one year from despatch.
Gene Name:	EBNA1 binding protein 2
Database Link:	Entrez Gene 10969 Human Q99848
Background:	EBNA1BP2 is required for the processing of the 27S pre-rRNA (By similarity).
Synonyms:	EBP2, Nucleolar protein p40
Note:	Molecular Weight: 34852 Da



[View online »](#)

Product images:

Western blot analysis of EBNA1BP2 Antibody (C-term) in NCI-H292 cell line lysates (35ug/lane). This demonstrates the EBNA1BP2 antibody detected the EBNA1BP2 protein (arrow).