

Product datasheet for **AP51354PU-N**

EAPP (C-term) Rabbit Polyclonal Antibody

Product data:

Product Type:	Primary Antibodies
Applications:	IHC, WB
Recommended Dilution:	ELISA: 1/1000. Western Blot: 1/100-1/500. Immunohistochemistry on Paraffin Sections: 1/10-1/50.
Reactivity:	Human
Host:	Rabbit
Isotype:	Ig
Clonality:	Polyclonal
Immunogen:	KLH conjugated synthetic peptide between 203-233 amino acids from the C-terminal region of human EAPP
Specificity:	This antibody recognizes Human EAPP (C-term).
Formulation:	PBS containing 0.09% (W/V) Sodium Azide as preservative State: Aff - Purified State: Liquid purified Ig fraction
Concentration:	lot specific
Purification:	Affinity Chromatography on Protein A
Conjugation:	Unconjugated
Storage:	Store undiluted at 2-8°C for one month or (in aliquots) at -20°C for longer. Avoid repeated freezing and thawing.
Stability:	Shelf life: one year from despatch.
Gene Name:	E2F associated phosphoprotein
Database Link:	Entrez Gene 55837 Human Q56P03
Background:	This gene encodes a phosphoprotein that interacts with several members of the E2F family of proteins. The protein localizes to the nucleus, and is present throughout the cell cycle except during mitosis. It functions to modulate E2F-regulated transcription and stimulate proliferation.

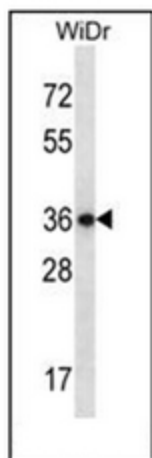


[View online »](#)

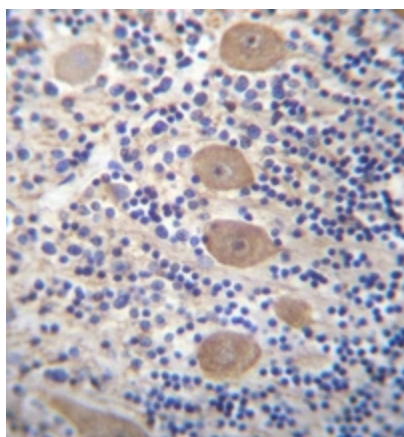
Synonyms: EAPP, C14orf11, BM036I, FLJ20578, MGC4957

Note: **Molecular Weight:** 32762 Da

Product images:



Western blot analysis of EAPP Antibody (C-term) in WiDr cell line lysates (35ug/lane). This demonstrates the EAPP antibody detected the EAPP protein (arrow).



Formalin fixed and paraffin embedded human cerebellum tissue reacted with EAPP Antibody (C-term) followed by peroxidase conjugation of the secondary antibody and DAB staining.